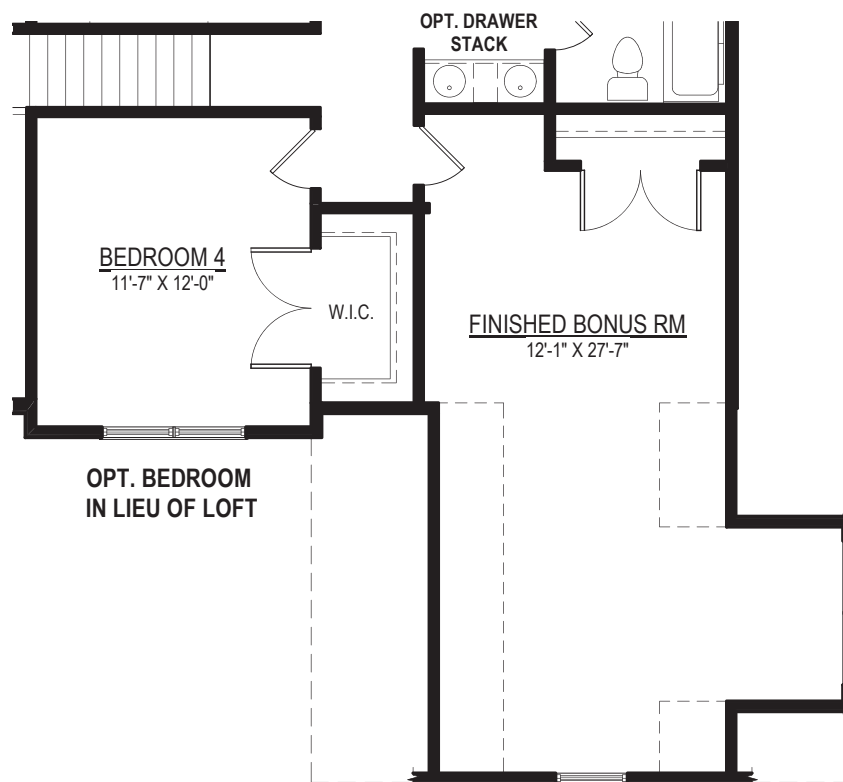
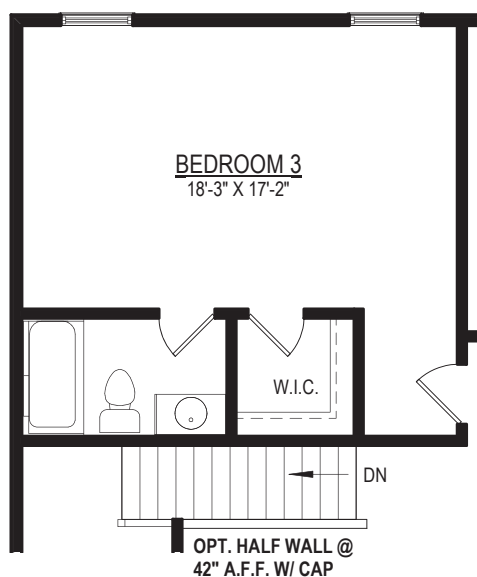


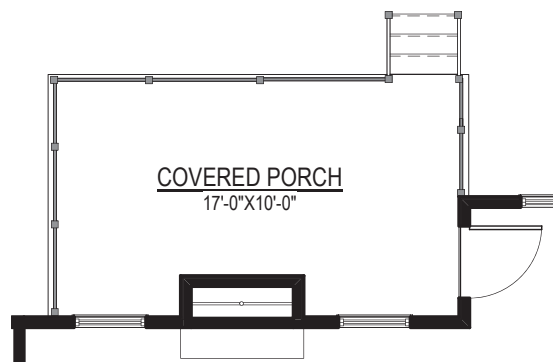
Options



OPT. FINISHED BONUS ROOM W/ DORMER



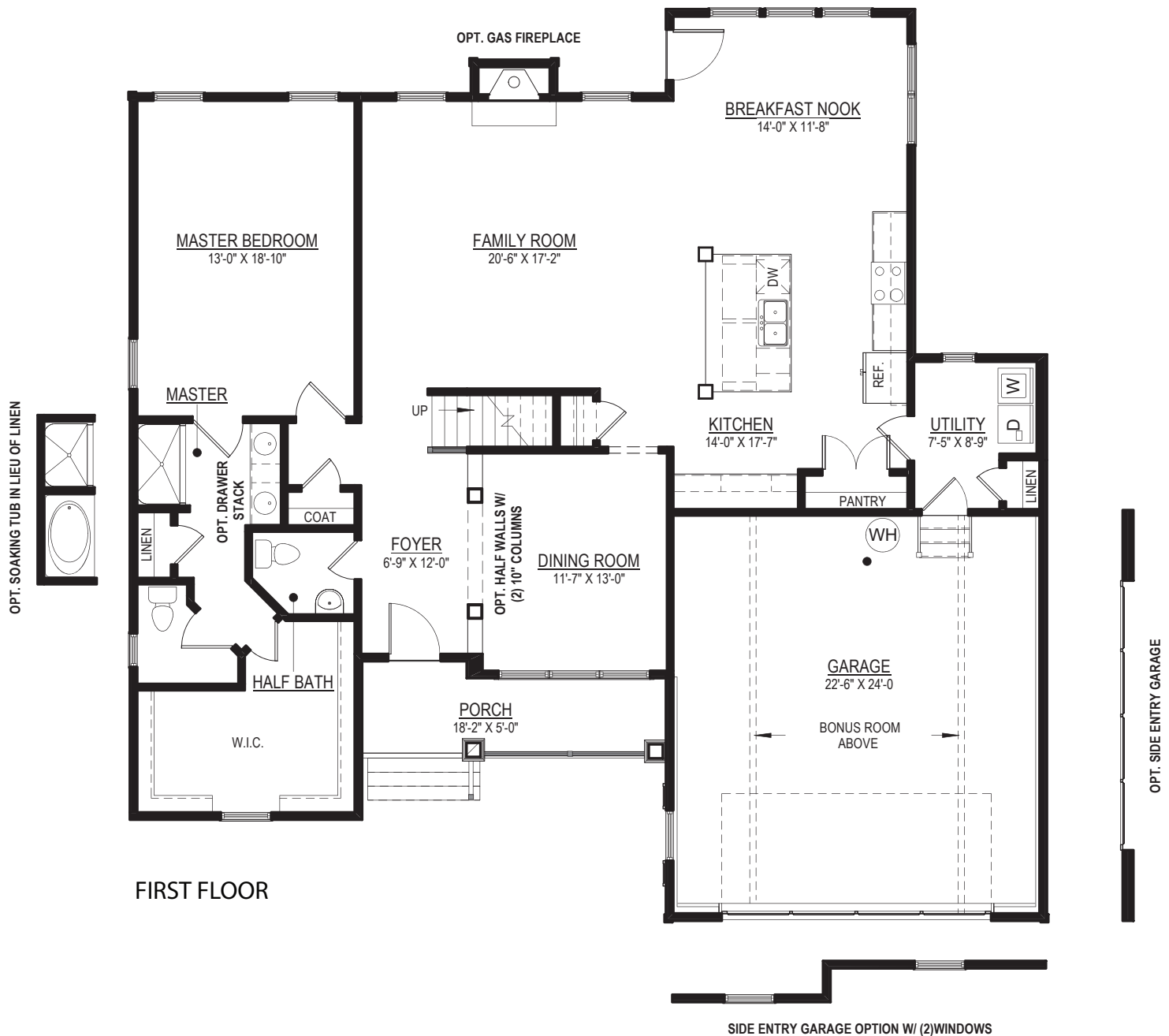
OPT. FULL BATH W/BEDROOM 3



**OPT. REAR COVERED PORCH
W/ OPT. DOUBLE SIDED FIREPLACE**

THE CREEKWOOD

3 BEDROOMS, 2.5 BATHS, LOFT,
DINING ROOM & UTILITY ROOM



Elevations shown are artist's rendering. All plans, details, and square footages are approximate and subject to change. Illustrations may not represent finished construction details. All optional items indicated are available at additional cost. Not all features available are shown. Please ask our Sales Representative for complete information.

THE CREEKWOOD



Elevation C

Shown with optional side entry garage optional metal watertables & raised stone veneer



Elevation A



Elevation B

*Shown with optional side entry garage
& optional raised brick*



9245 Shady Grove Rd., Suite 200
Mechanicsville, VA 23116
www.rcibuildersnewhomes.com

Elevations shown are artist's rendering. All plans, details, and square footages are approximate and subject to change. Illustrations may not represent finished construction details.
All optional items indicated are available at additional cost. Not all features available are shown. Please ask our Sales Representative for complete information.

Updated 01.17.2020

