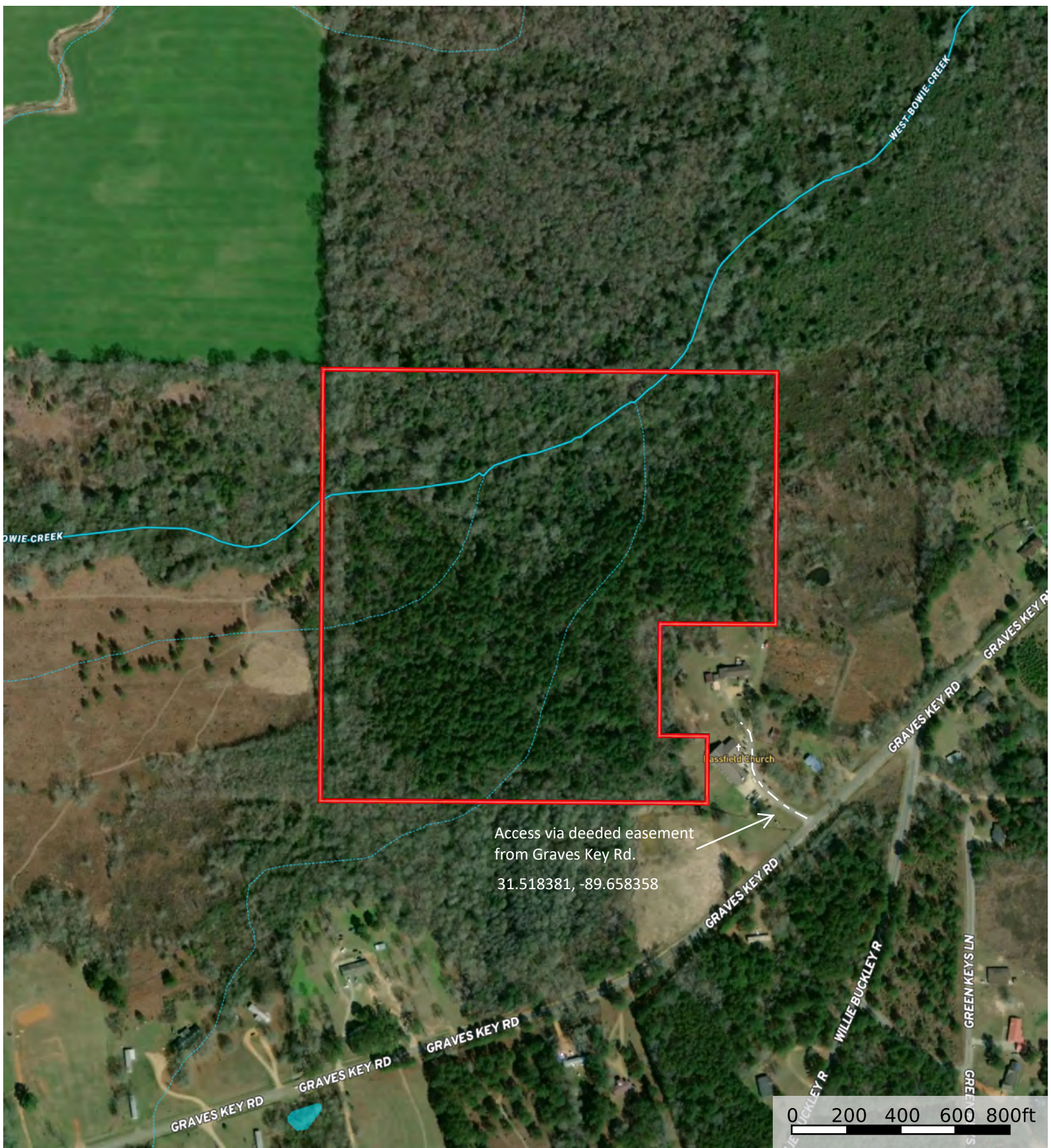
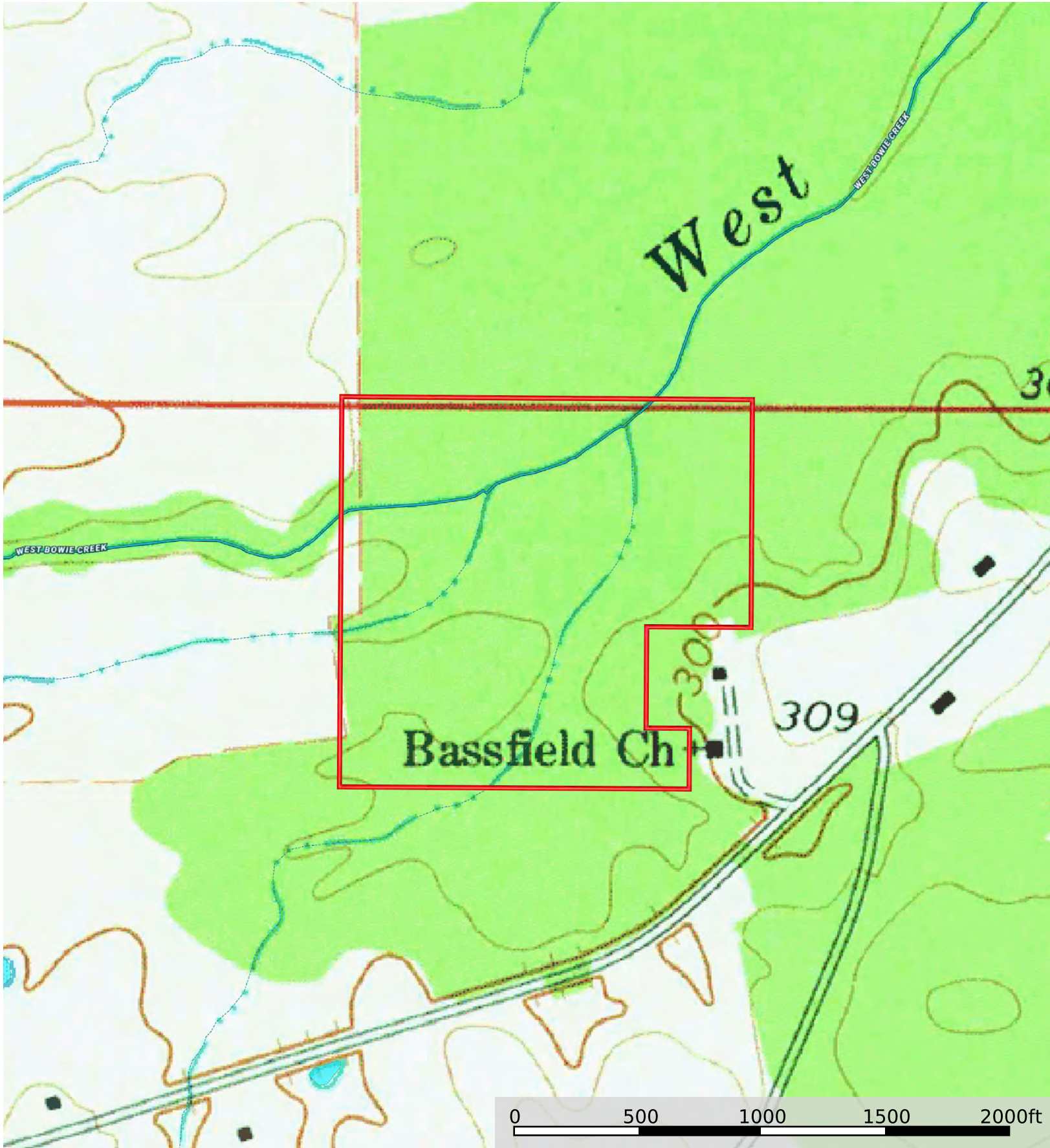


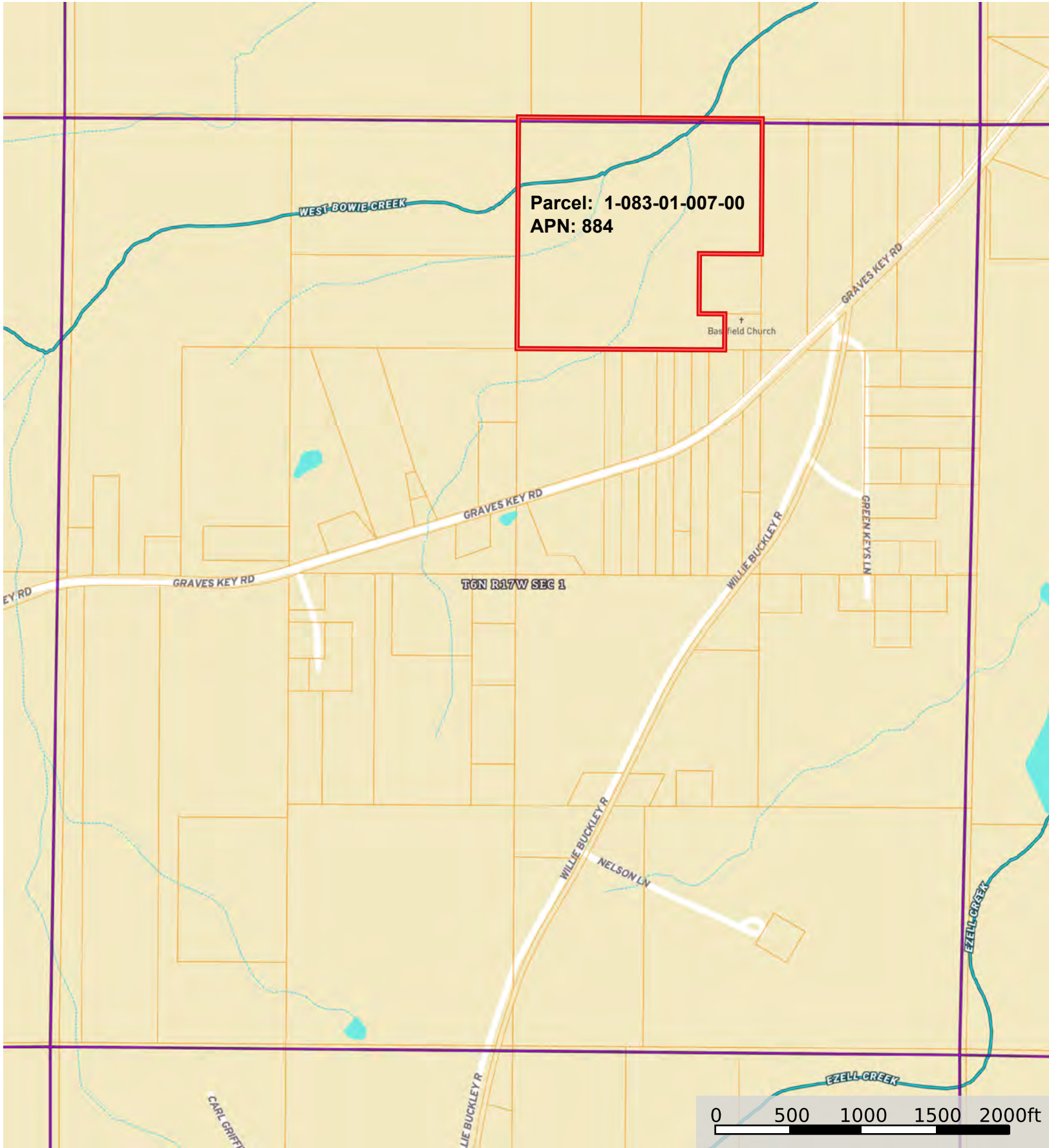
35.84 +/- ACRES
SEC 1-T6N-R17W, JEFFERSON DAVIS COUNTY, MISSISSIPPI



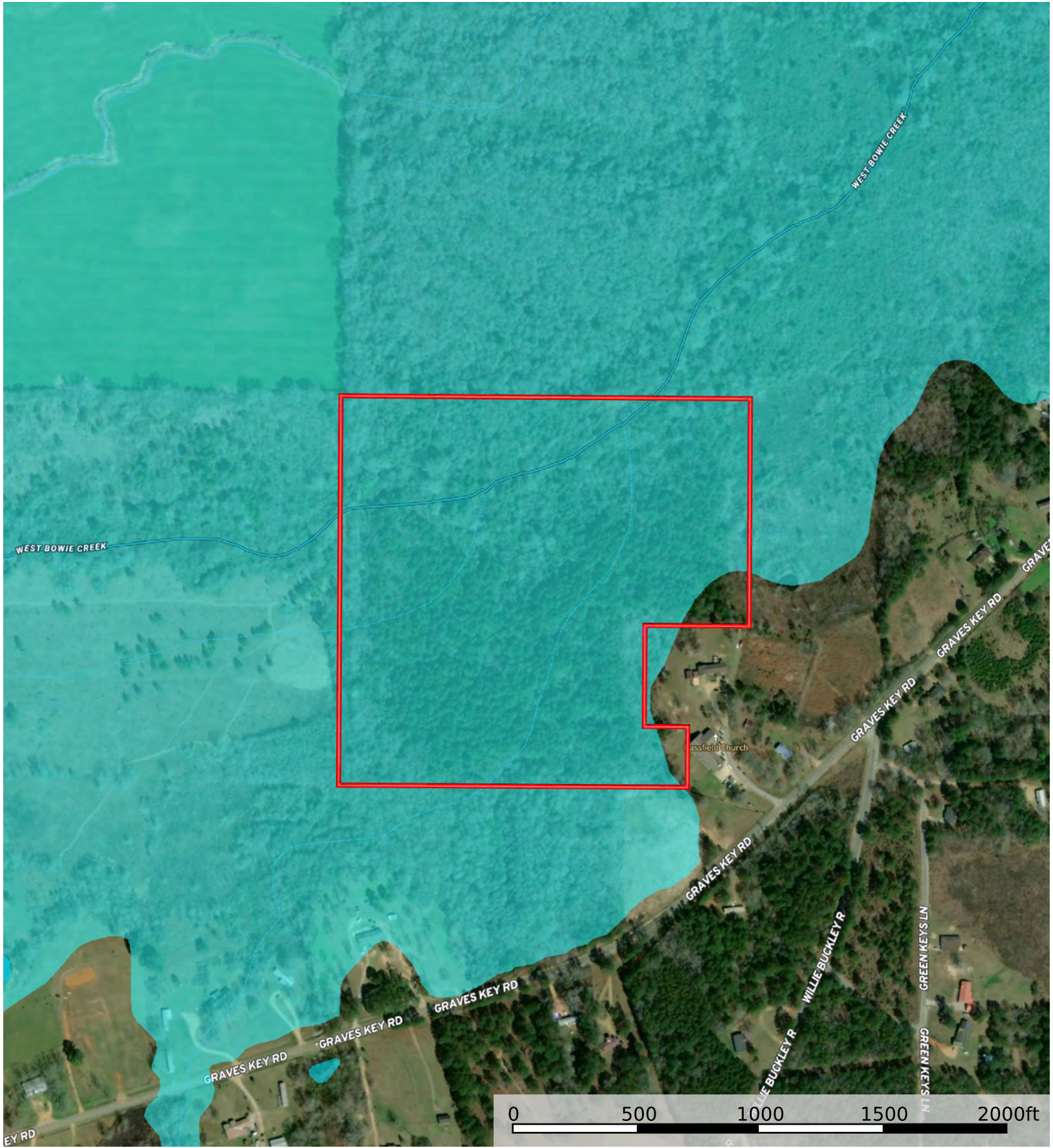
35.84 +/- ACRES
SEC 1-T6N-R17W, JEFFERSON DAVIS COUNTY, MISSISSIPPI



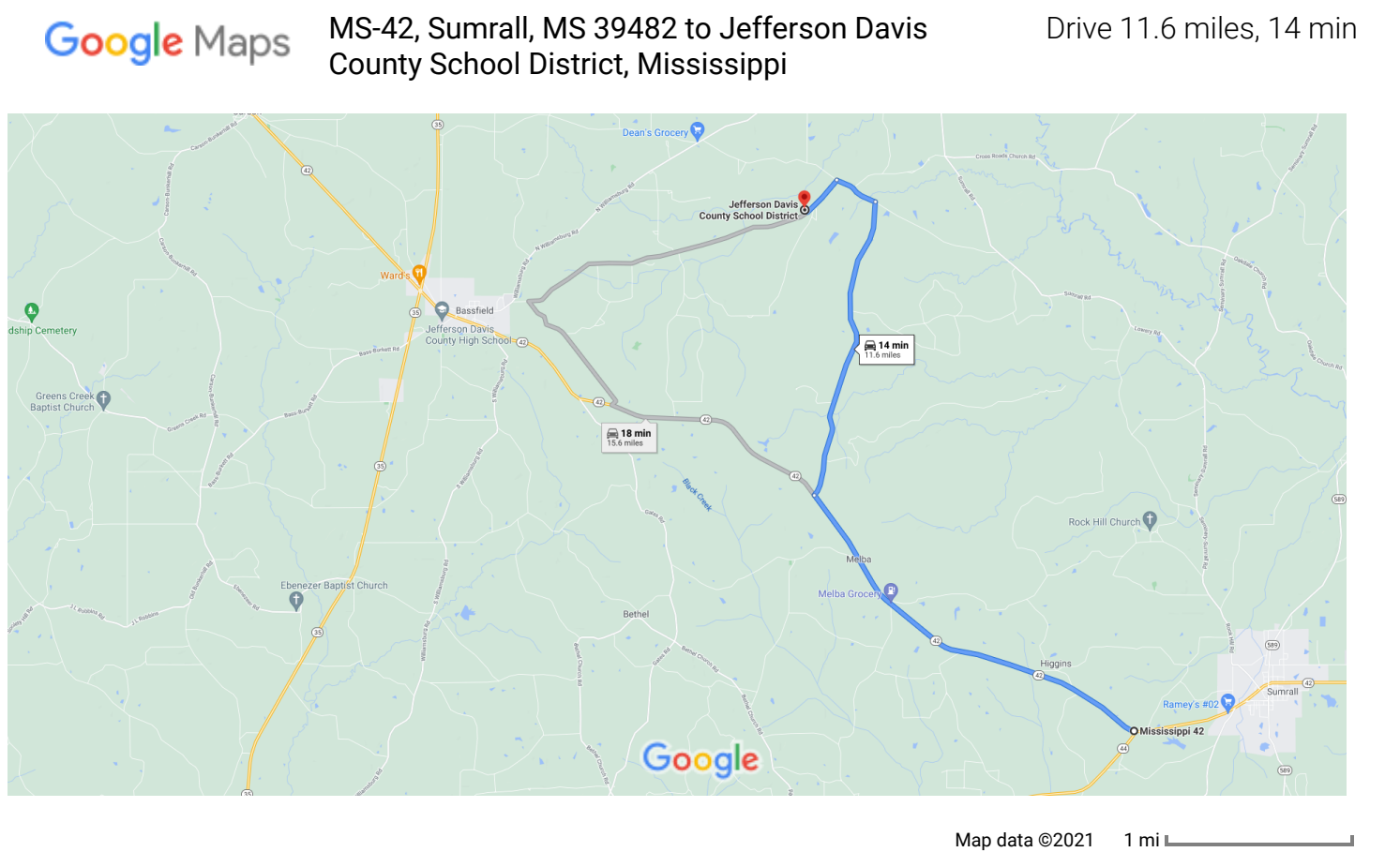
35.84 +/- ACRES
SEC 1-T6N-R17W, JEFFERSON DAVIS COUNTY, MISSISSIPPI



35.84 +/- ACRES
SEC 1-T6N-R17W, JEFFERSON DAVIS COUNTY, MISSISSIPPI



- | | | | | | | | | |
|--|---|---|--|---|--|---|---|--|
|  Boundary |  100 Year Floodplain |  500 Year Floodplain |  Floodway |  Special |  Unmapped/ Not Included |  Stream, Intermittent |  River/Creek |  Water Body |
|--|---|---|--|---|--|---|---|--|



MS-42

Sumrall, MS 39482

- ↑

1. Head west on MS-42 W toward Sparrow Ln

5.9 mi
- ➡

2. Turn right onto Gum Swamp Rd

4.4 mi
- ↶

3. Turn left onto Goodhope Rd

0.6 mi
- ↶

4. Turn left onto Graves Keys Rd

📍

Destination will be on the right

0.6 mi

Jefferson Davis County School District

Mississippi

These directions are for planning purposes only. You may find that construction projects, traffic, weather, or other events may cause conditions to differ from the map results, and you should plan your route accordingly. You must obey all signs or notices regarding your route.