

# Aerial Map



Boundary

**0.6 +/- ACRES**

**SECTION 13, TOWNSHIP 10 NORTH, RANGE 13 WEST, JASPER COUNTY, MISSISSIPPI**





# Contour Map



Boundary

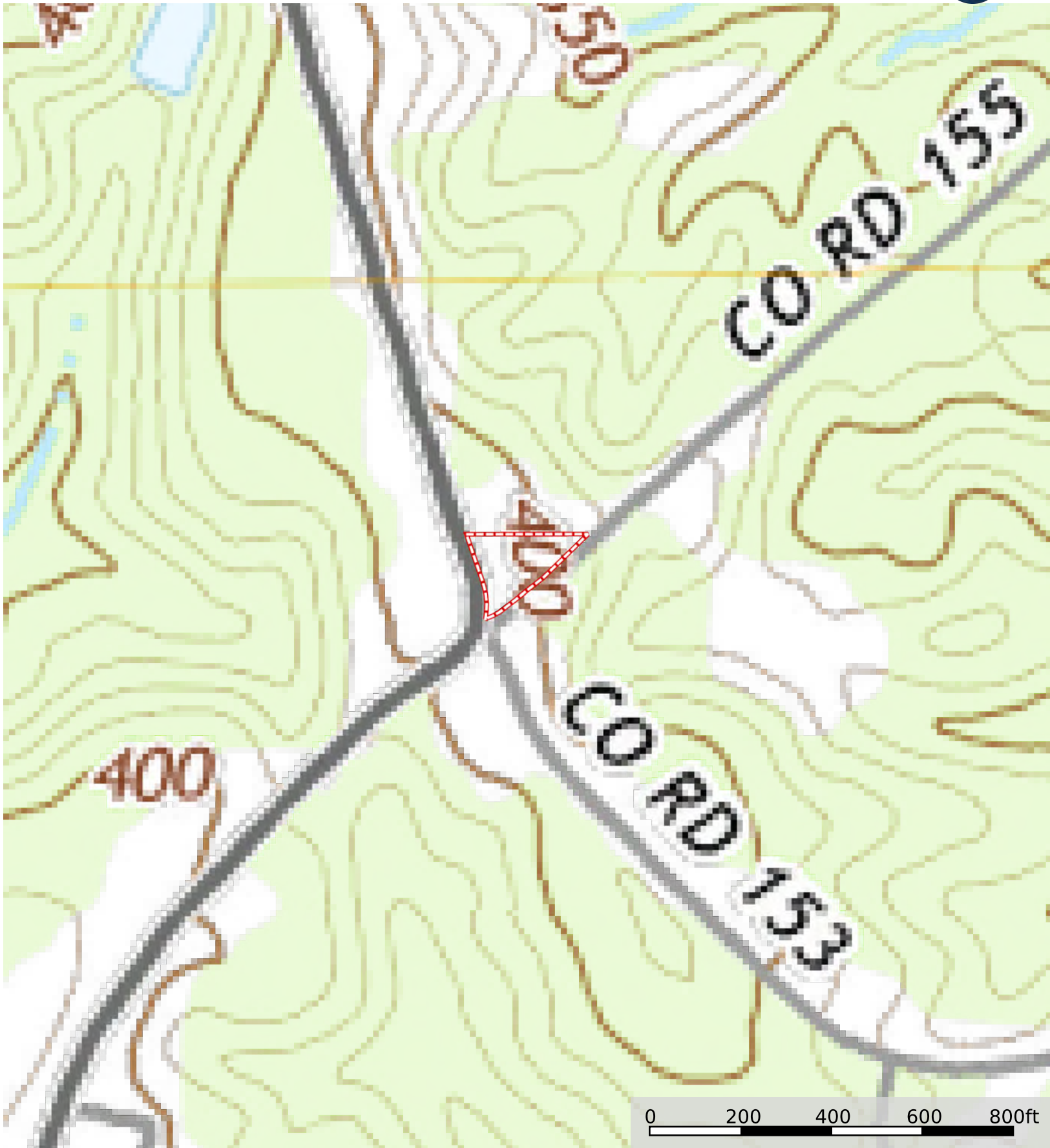
**0.6 +/- ACRES**


**SECTION 13, TOWNSHIP 10 NORTH, RANGE 13 WEST, JASPER COUNTY, MISSISSIPPI**





# Topo Map



 Boundary

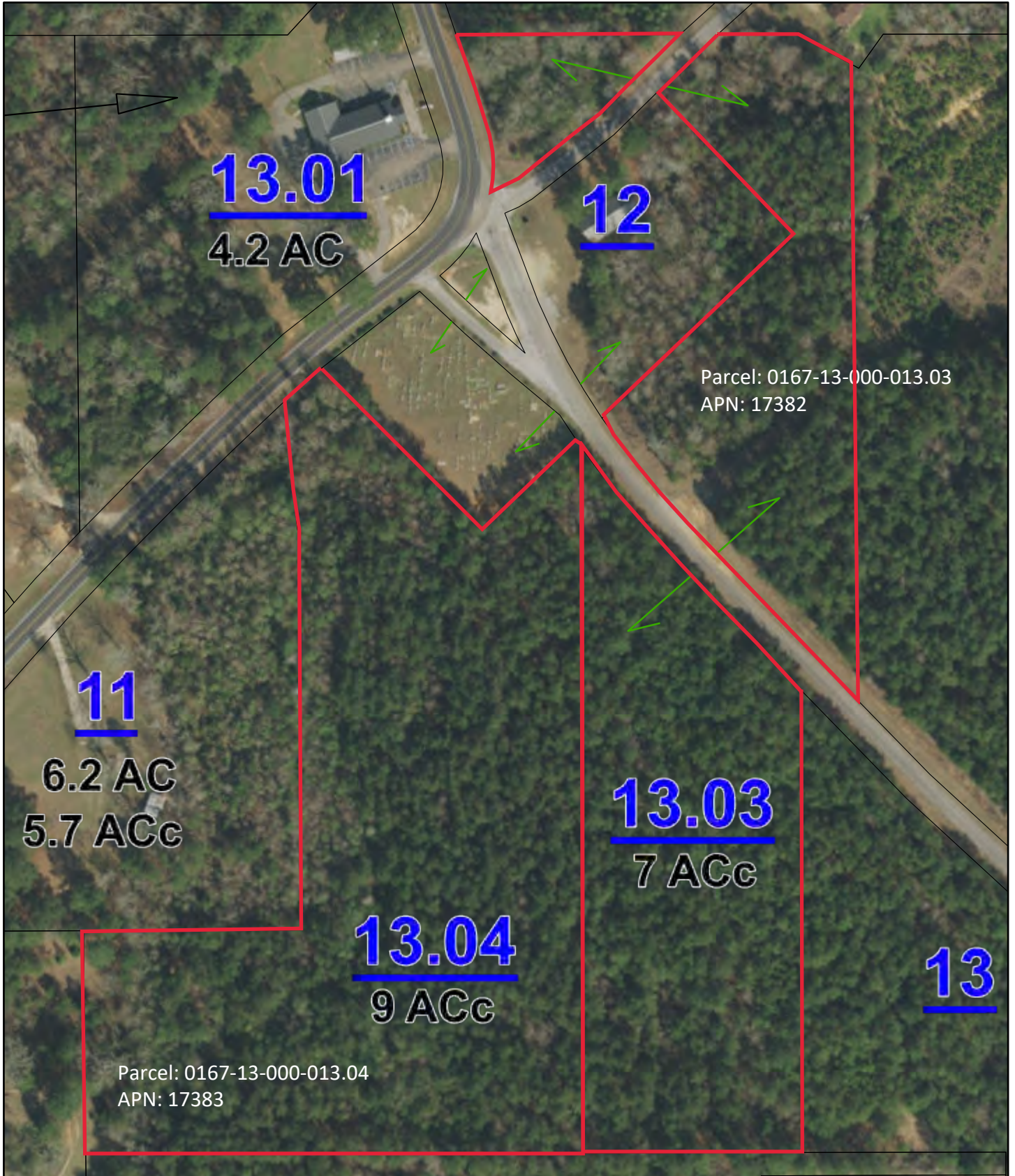
**0.6 +/- ACRES**

**SECTION 13, TOWNSHIP 10 NORTH, RANGE 13 WEST, JASPER COUNTY, MISSISSIPPI**





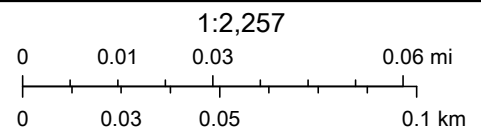
# SEC 13, T10N, R13W, Jasper County MS



9/23/2021, 9:48:51 AM

- LandHook
- Leader
- Parcels
- jasper\_ms\_subdref
- jasper\_ms\_roadname

- jasper\_ms\_parno
- jasper\_ms\_lotno
- jasper\_ms\_exempt
- jasper\_ms\_dim
- jasper\_ms\_ac



Esri, HERE, Garmin, INCREMENT P, USGS, EPA, Esri, HERE, Garmin, (c) OpenStreetMap contributors, and the GIS user community