

Aerial Map



Boundary

12.16 +/- ACRES

SECTION 13, TOWNSHIP 10 NORTH, RANGE 13 WEST, JASPER COUNTY, MISSISSIPPI

South & Company Properties, LLC

P: 601-818-4004

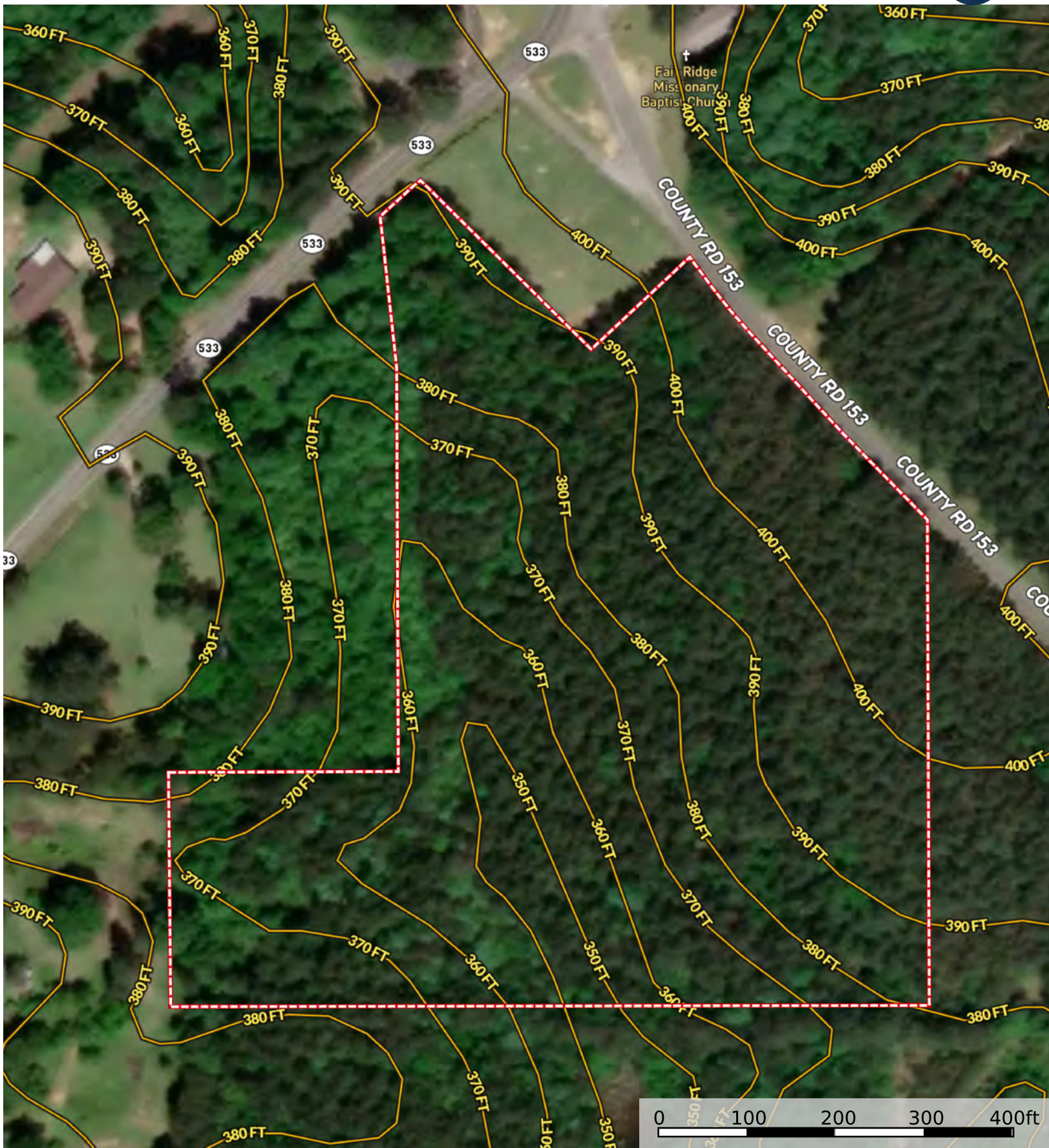
southandcompanyproperties.com

6555 U S 98, Ste 14, Hattiesburg,



The information contained herein was obtained from sources deemed to be reliable. MapRight Services makes no warranties or guarantees as to the completeness or accuracy thereof.

Contour Map



Boundary

12.16 +/- ACRES

SECTION 13, TOWNSHIP 10 NORTH, RANGE 13 WEST, JASPER COUNTY, MISSISSIPPI

South & Company Properties, LLC

P: 601-818-4004

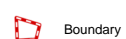
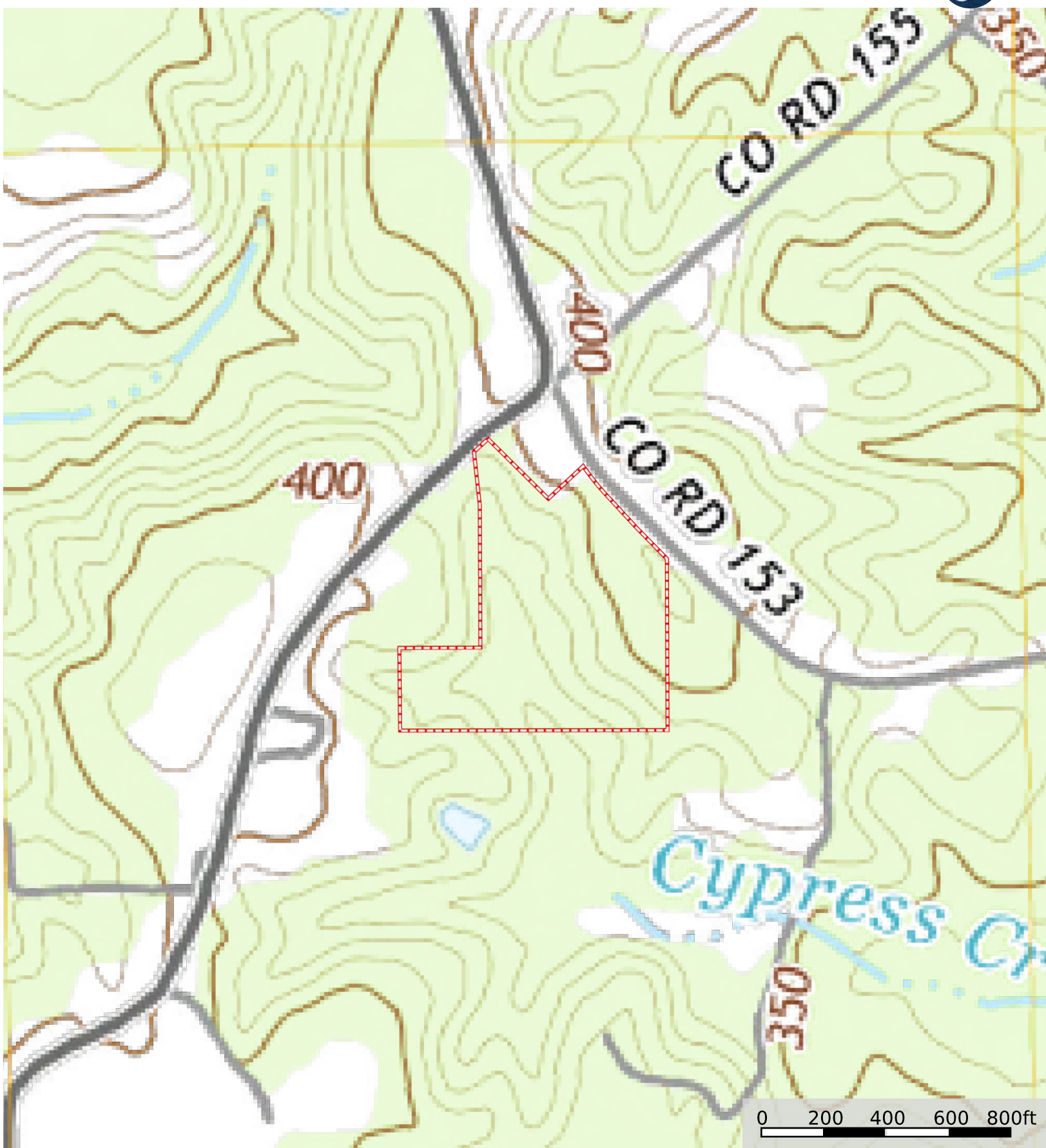
southandcompanyproperties.com

6555 U S 98, Ste 14, Hattiesburg,



The information contained herein was obtained from sources deemed to be reliable. MapRight Services makes no warranties or guarantees as to the completeness or accuracy thereof.

Topo Map



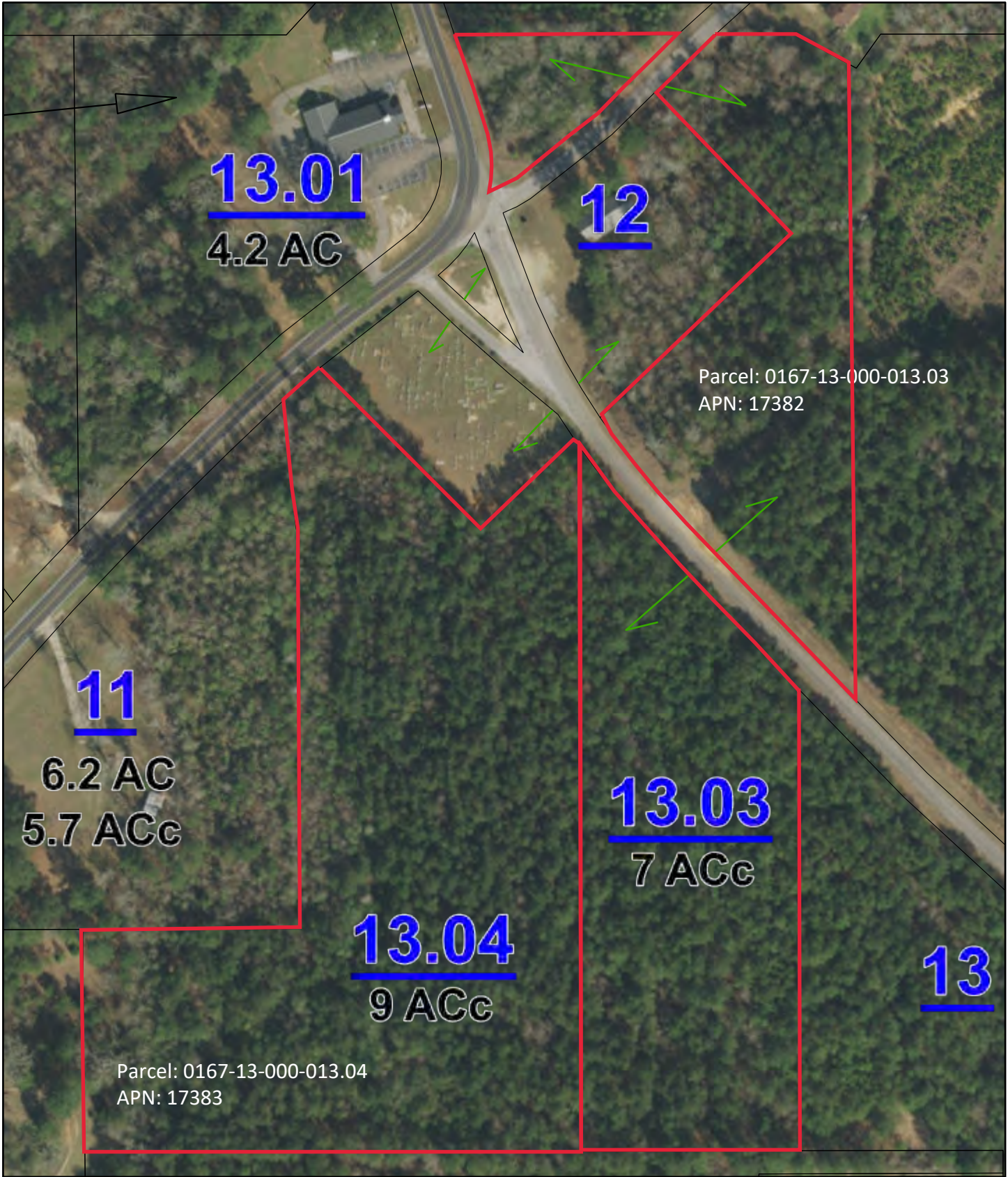
Boundary

12.16 +/- ACRES

SECTION 13, TOWNSHIP 10 NORTH, RANGE 13 WEST, JASPER COUNTY, MISSISSIPPI



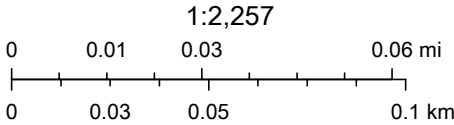
SEC 13, T10N, R13W, Jasper County MS



9/23/2021, 9:48:51 AM

- LandHook
- Leader
- Parcels
- jasper_ms_subdref
- jasper_ms_roadname

- jasper_ms_parno
- jasper_ms_lotno
- jasper_ms_exempt
- jasper_ms_dim
- jasper_ms_ac



Esri, HERE, Garmin, INCREMENT P, USGS, EPA, Esri, HERE, Garmin, (c) OpenStreetMap contributors, and the GIS user community