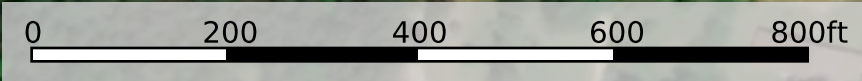


Aerial Map



3.03 +/- ACRES

SECTION 13, TOWNSHIP 10 NORTH, RANGE 13 WEST, JASPER COUNTY, MISSISSIPPI



T10N R13W

Boundary



Contour Map



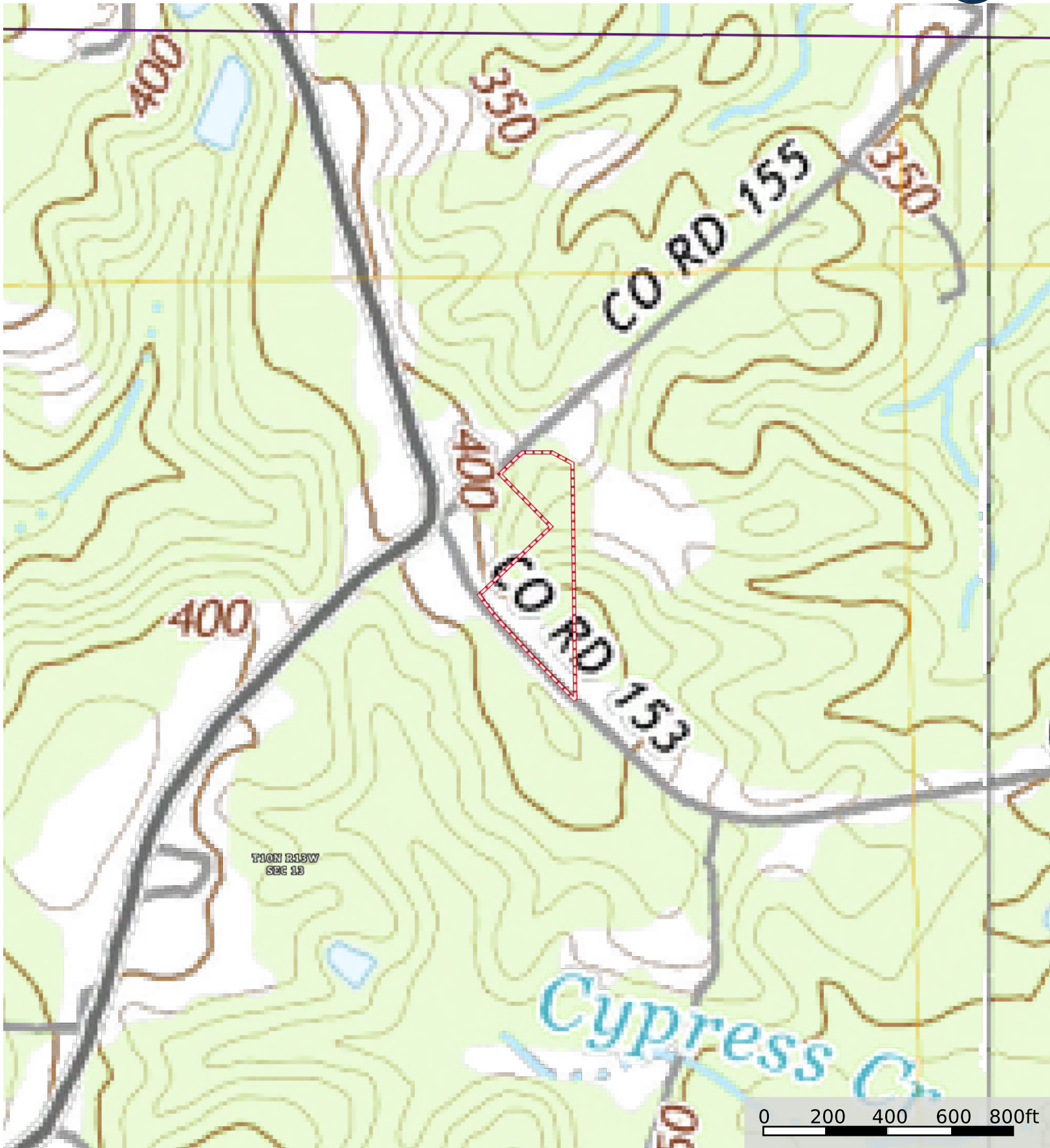
Boundary

3.03 +/- ACRES

SECTION 13, TOWNSHIP 10 NORTH, RANGE 13 WEST, JASPER COUNTY, MISSISSIPPI



Topo Map



T10N R13W
SEC 13

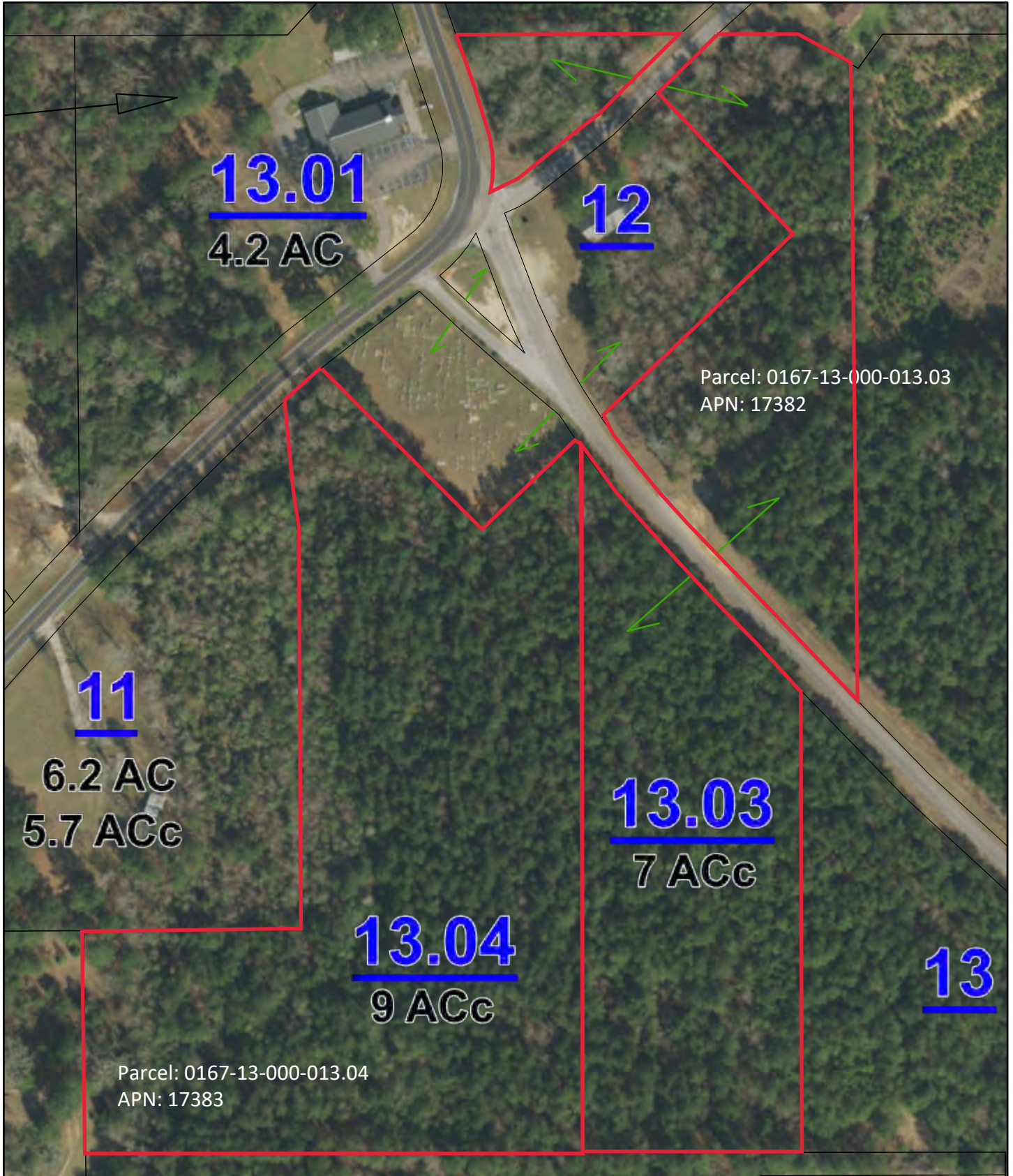
0 200 400 600 800ft

Boundary

3.03 +/- ACRES

SECTION 13, TOWNSHIP 10 NORTH, RANGE 13 WEST, JASPER COUNTY, MISSISSIPPI

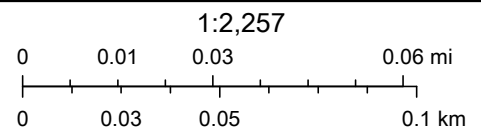
SEC 13, T10N, R13W, Jasper County MS



9/23/2021, 9:48:51 AM

- LandHook
- Leader
- Parcels
- jasper_ms_subdref
- jasper_ms_roadname

- jasper_ms_parno
- jasper_ms_lotno
- jasper_ms_exempt
- jasper_ms_dim
- jasper_ms_ac



Esri, HERE, Garmin, INCREMENT P, USGS, EPA, Esri, HERE, Garmin, (c) OpenStreetMap contributors, and the GIS user community