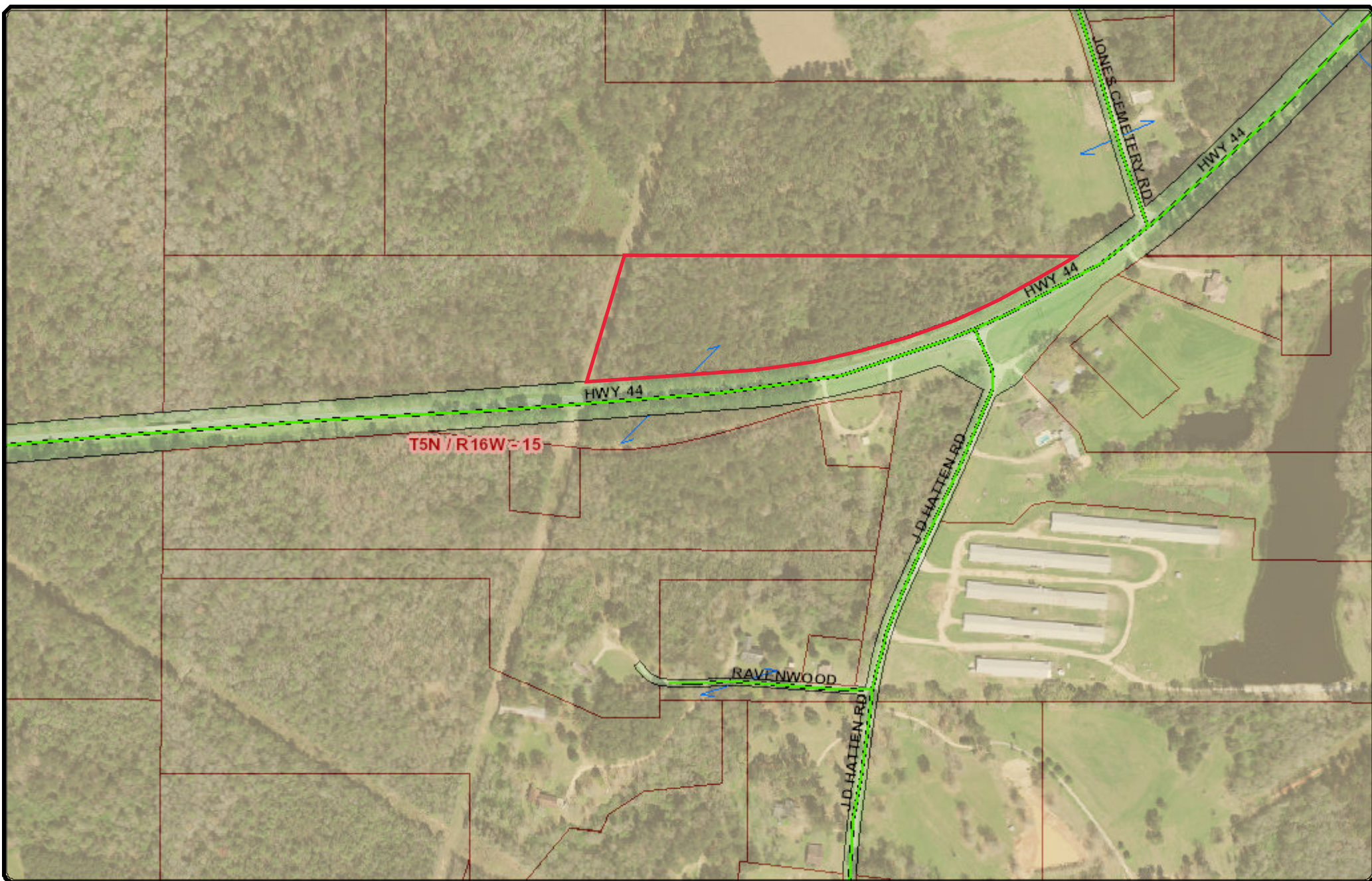


Lamar County Geoportal Map

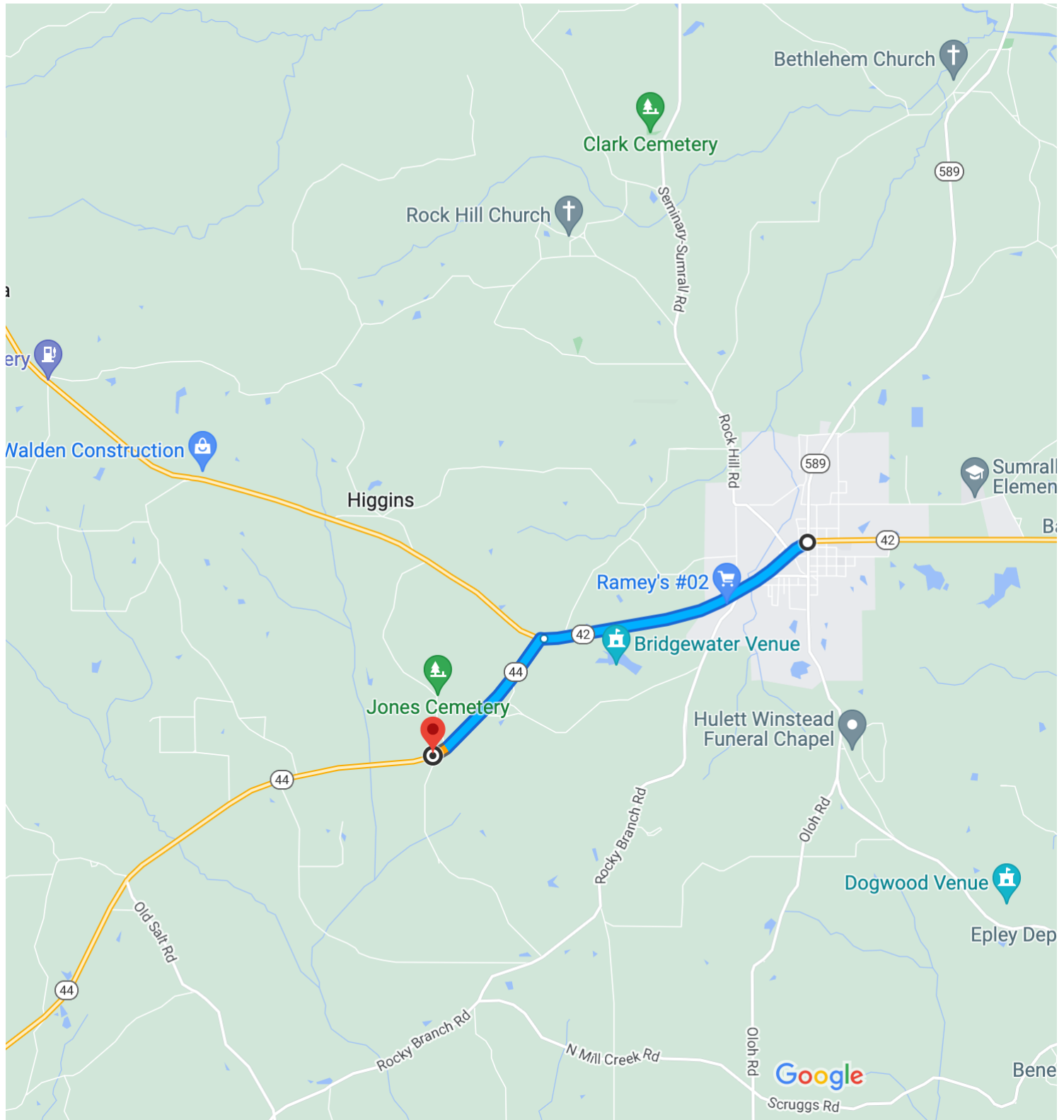


DISCLAIMER: Any user of this map product accepts its faults and assumes all responsibility for the use thereof, and further agrees to hold Lamar County harmless from and against any damage, loss or liability arising from any use of the map product. Users are cautioned to consider carefully the provisional nature of the maps and data before using it for decisions that concern personal or public safety or the conduct of business that involves monetary or operational consequences. Conclusions drawn from, or actions undertaken, on the basis of such maps and data, are the sole responsibility of the user.

March 3, 2022

1 inch = 382 feet

0 210 420 630 840
Feet



Map data ©2022 1 mi

From the intersection of Hwy 42 & Hwy 589 in Sumrall, MS

- Travel west on MS-42 W for 2 miles.
- Turn left on Hwy 44; continue 1.2 miles.
- Property will be on the right near J. D. Hatten Rd.
- <https://goo.gl/maps/ujUhL2nNVCKAywdc7>