


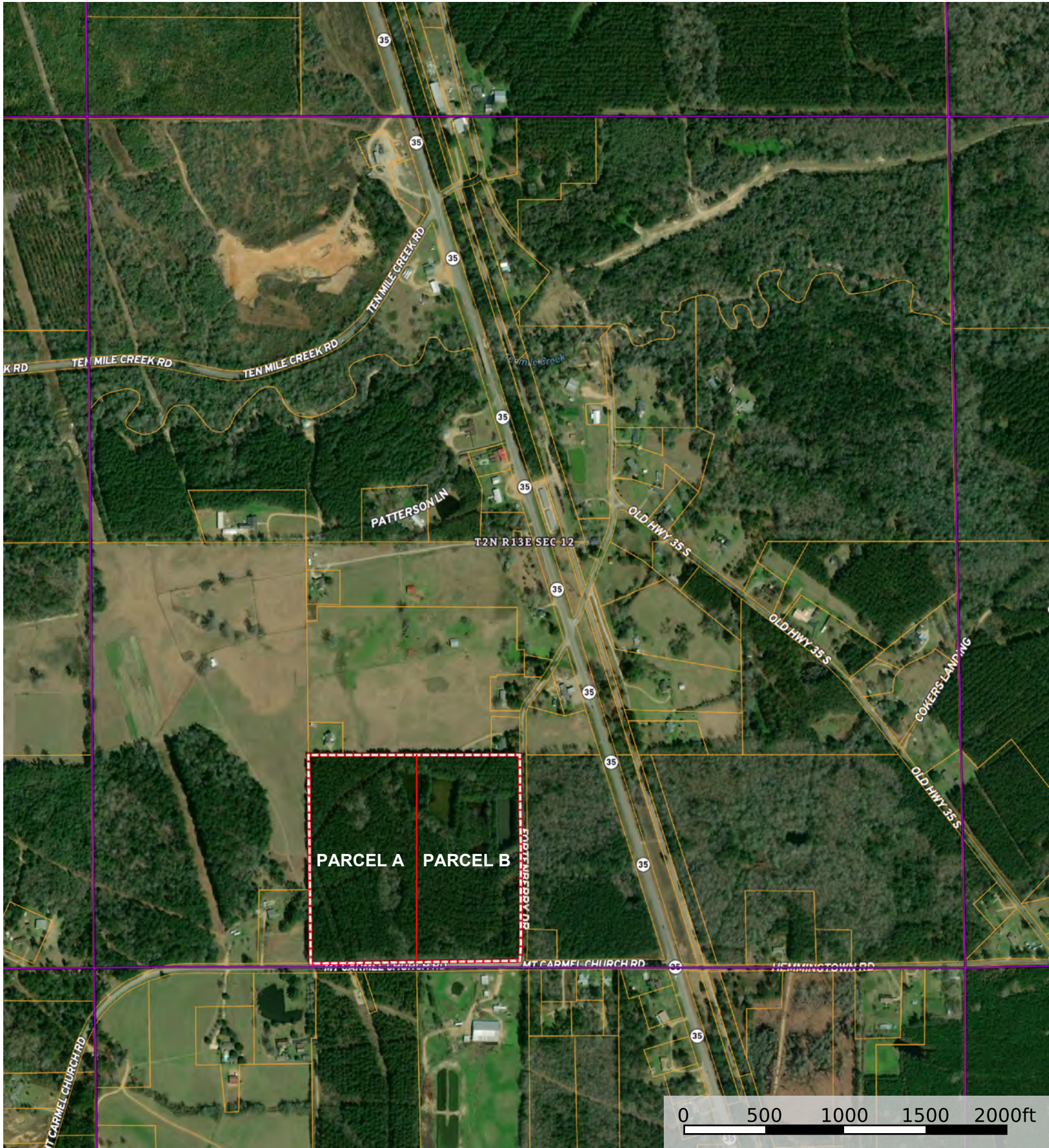
Boundary

* Satellite imagery is out of date. Timber has been harvested and replanted.

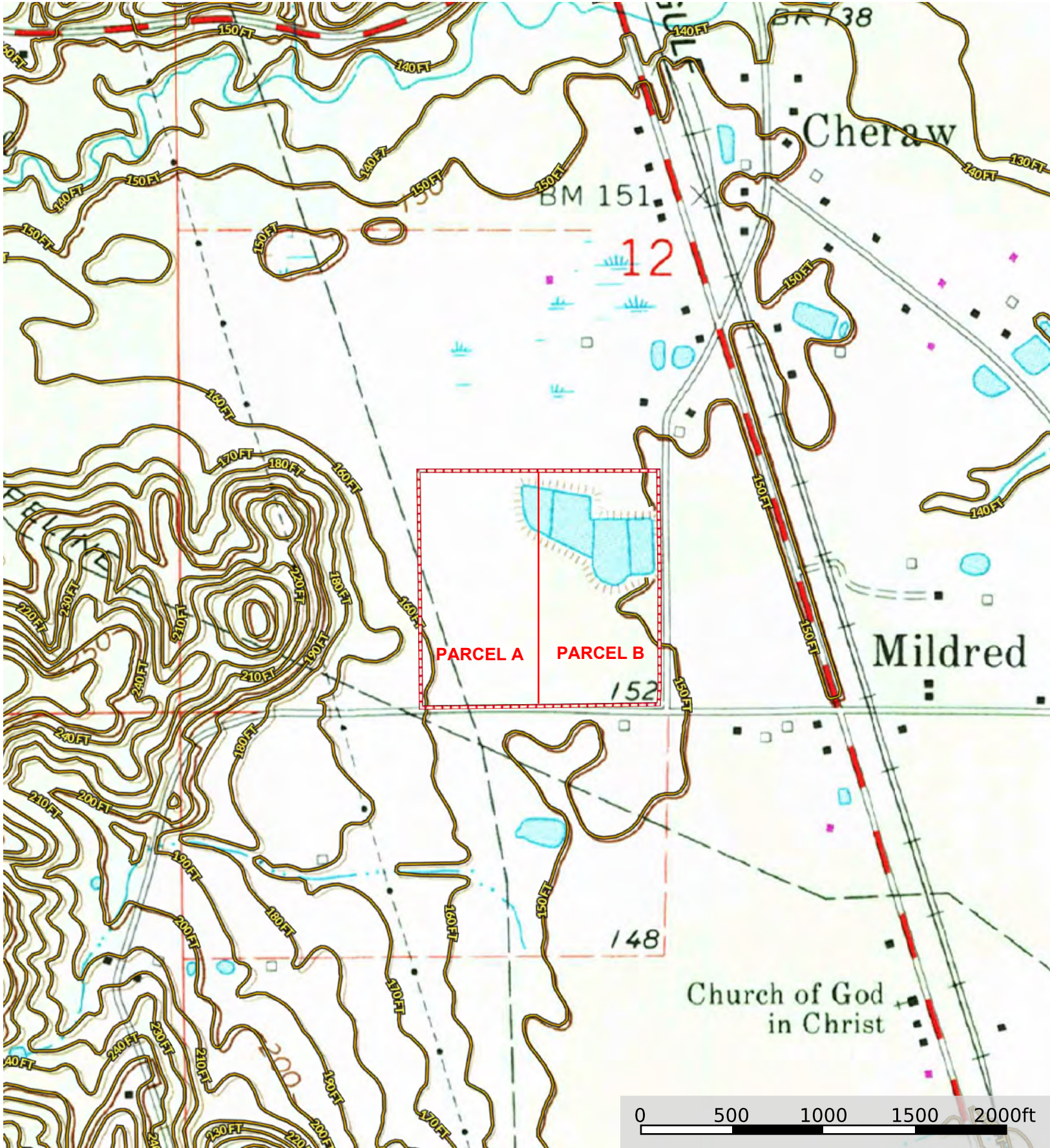


 Boundary

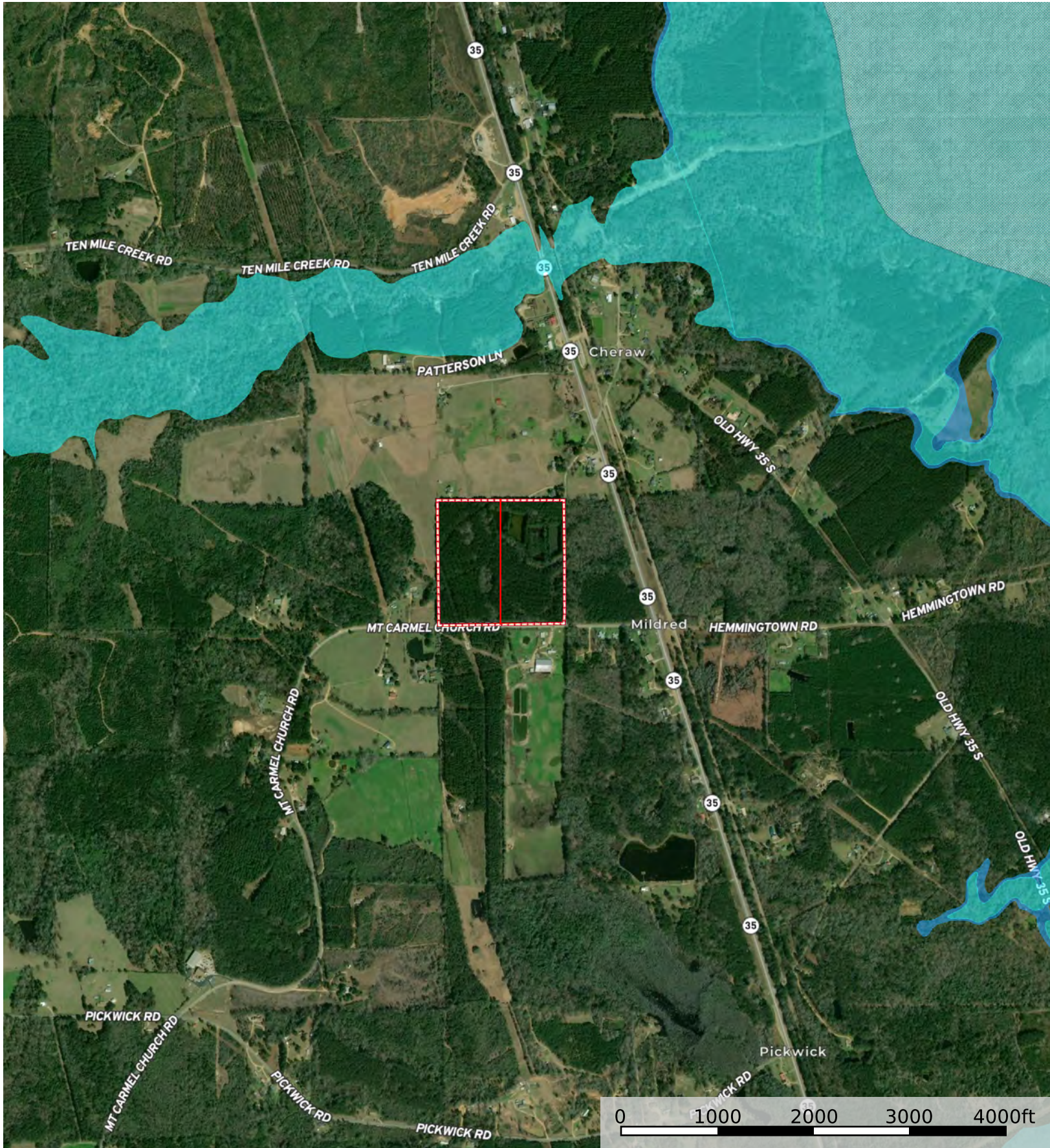
* Satellite imagery is out of date. Timber has been harvested and replanted.



* Satellite imagery is out of date. Timber has been harvested and replanted.

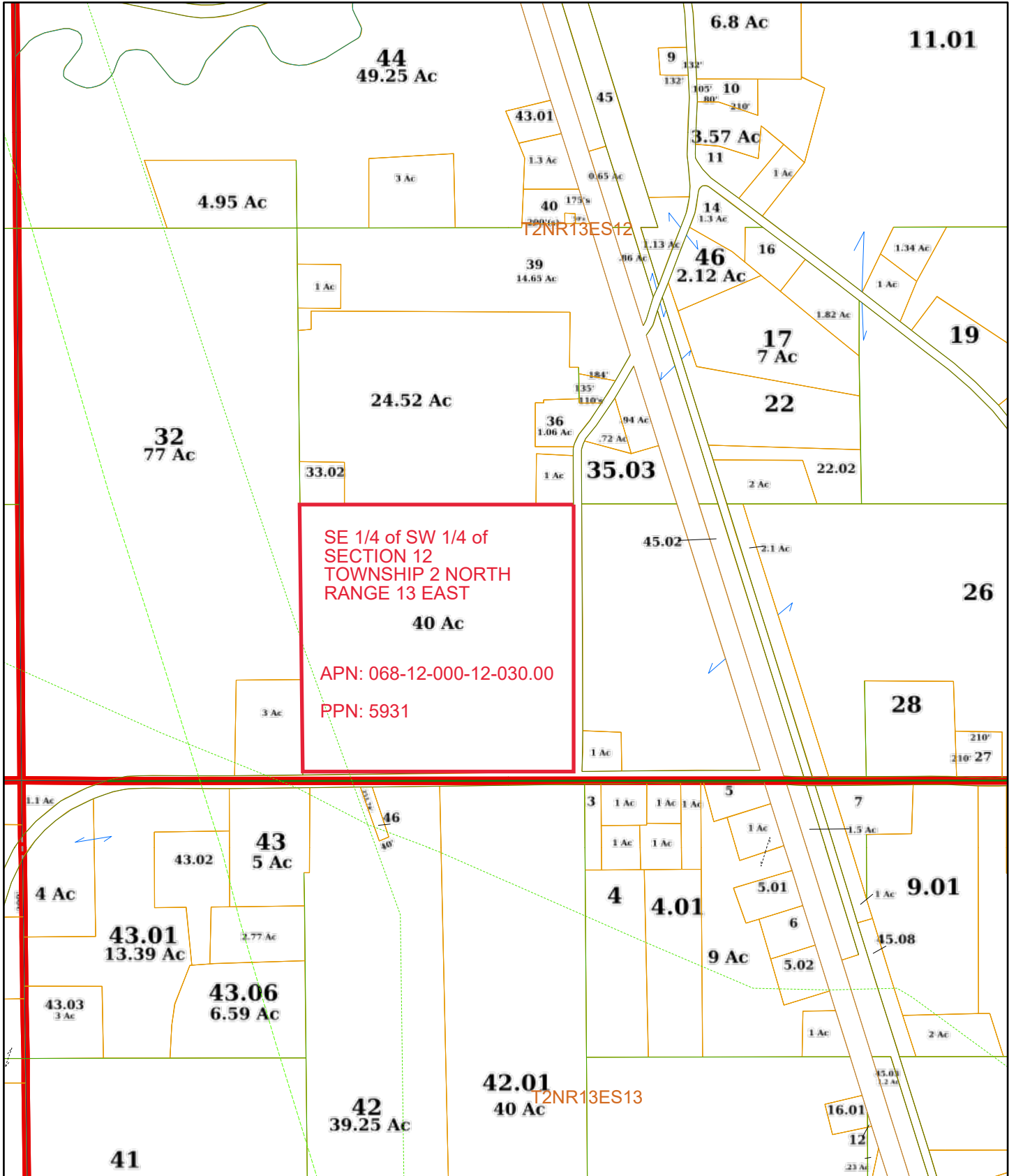


* Satellite imagery is out of date. Timber has been harvested and replanted.



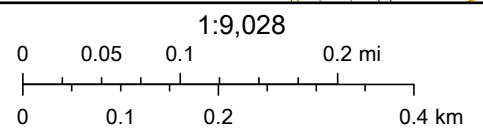
* Satellite imagery is out of date. Timber has been harvested and replanted.

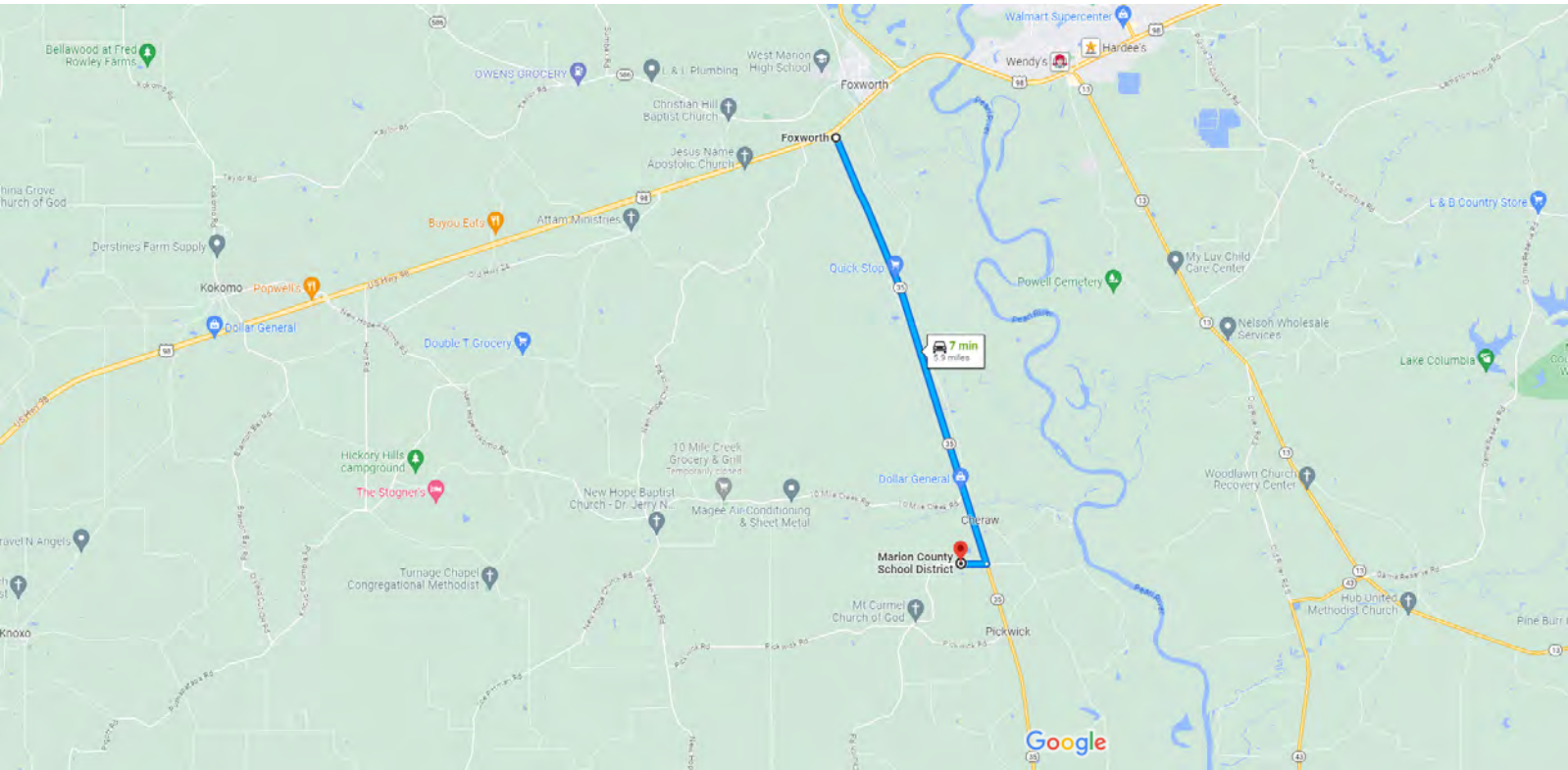
Marion County Tax Map



7/26/2023, 11:30:22 AM

MiscellaneousLine	Tax Boundary	Water Property
Dashed Landhook	County ROW	NonBoundary Line
Gas Pipe Line	Parcel	Section
Landhook	Quarter Section	Township
Leader Line	Section	TaxParcel
Transmission Line	State ROW	PLSS_Township





Drive-to-Directions (from the intersection of Hwy 98 and Hwy 35 S in Foxworth, MS

Map data ©2023 1 mi

Foxworth
Mississippi 39483

- 1. Head southeast on MS-35 S toward Hwy 35 Srv Rd 5.6 mi
 - 2. Turn right onto Mt Carmel Church Rd 0.3 mi
- Destination will be on the right

Marion County School District
Mississippi

Google Map Link: <https://goo.gl/maps/EzM9zKfFJnFtVyFf8>

Latitude: 31.148037
Longitude: -89.847502