



**5.6 +/- ACRES
SOLD**

**3 +/- ACRES
SOLD**

**6 +/- ACRES
SOLD**

**3 +/- ACRES
FOR SALE**

ADDITIONAL ACREAGE AVAILABLE

0 200 400 600 800ft

mapbox

Boundary Boundary

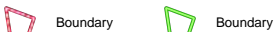
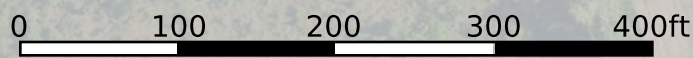
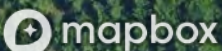
Boundaries and dimensions are approximate. This is not a survey.



**6 +/- ACRES
SOLD**

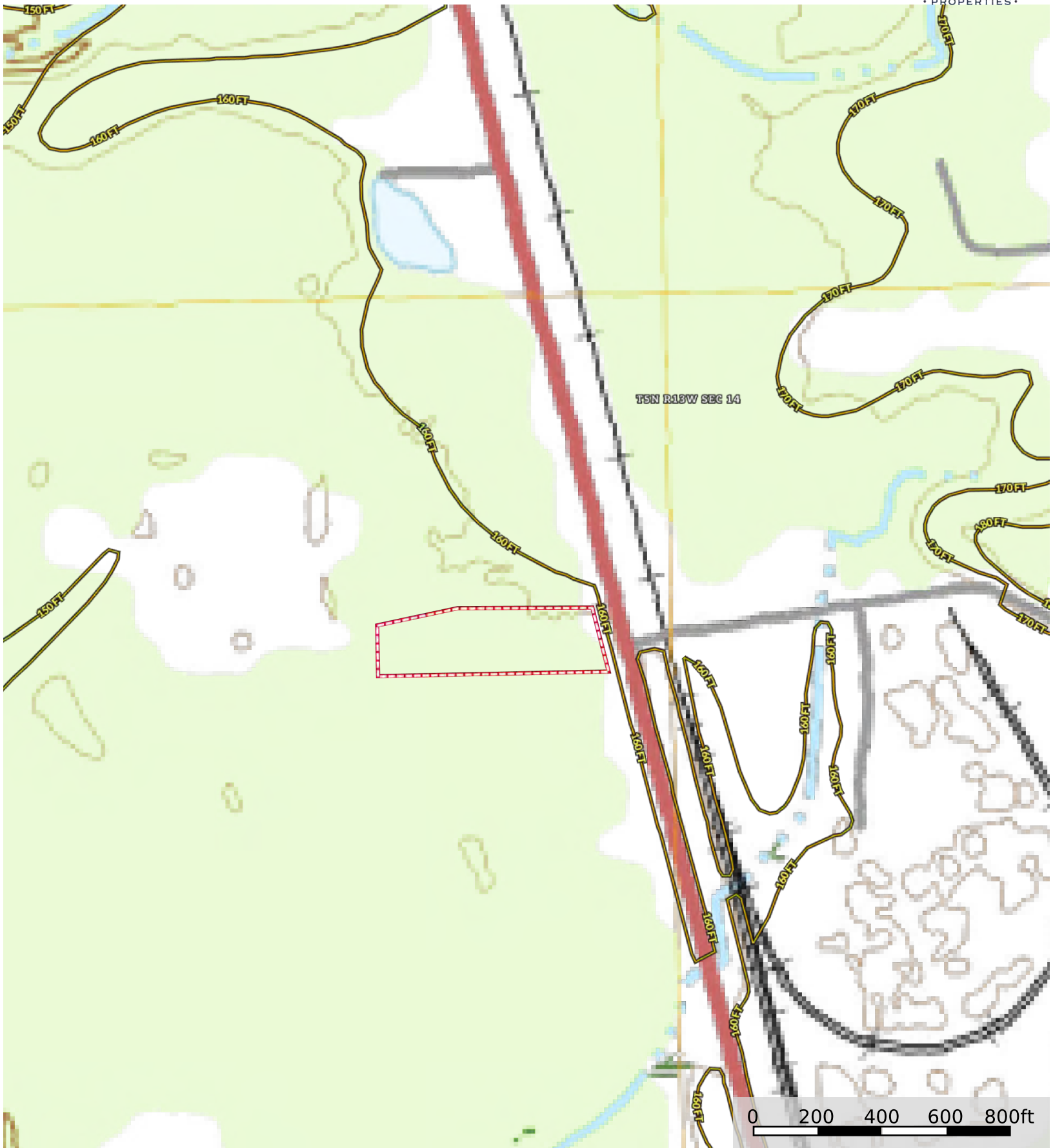
**3 +/- ACRES
FOR SALE**

ADDITIONAL ACREAGE AVAILABLE

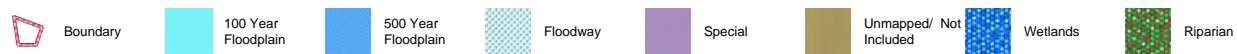
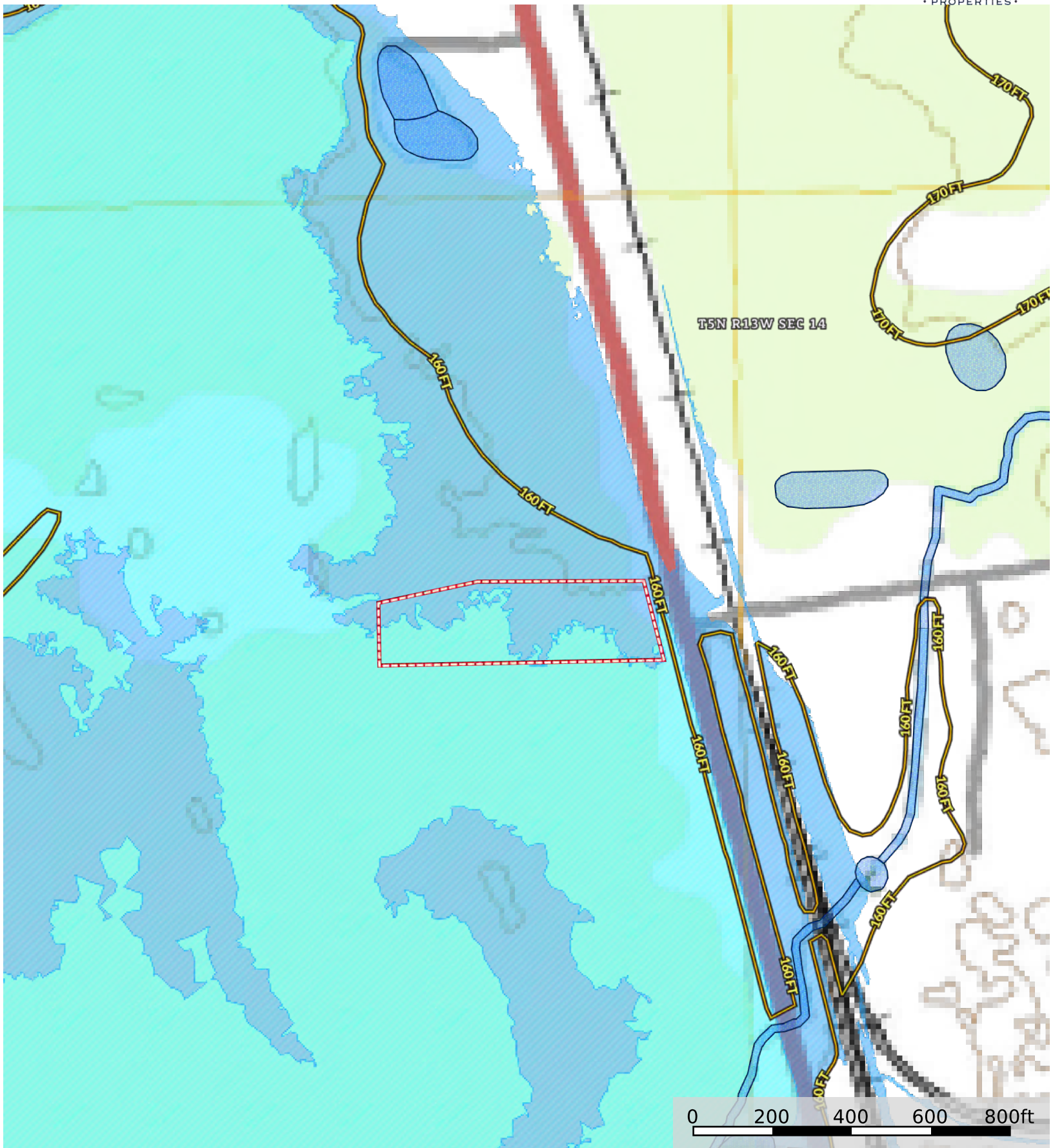


Boundaries and dimensions are approximate. This is not a survey.

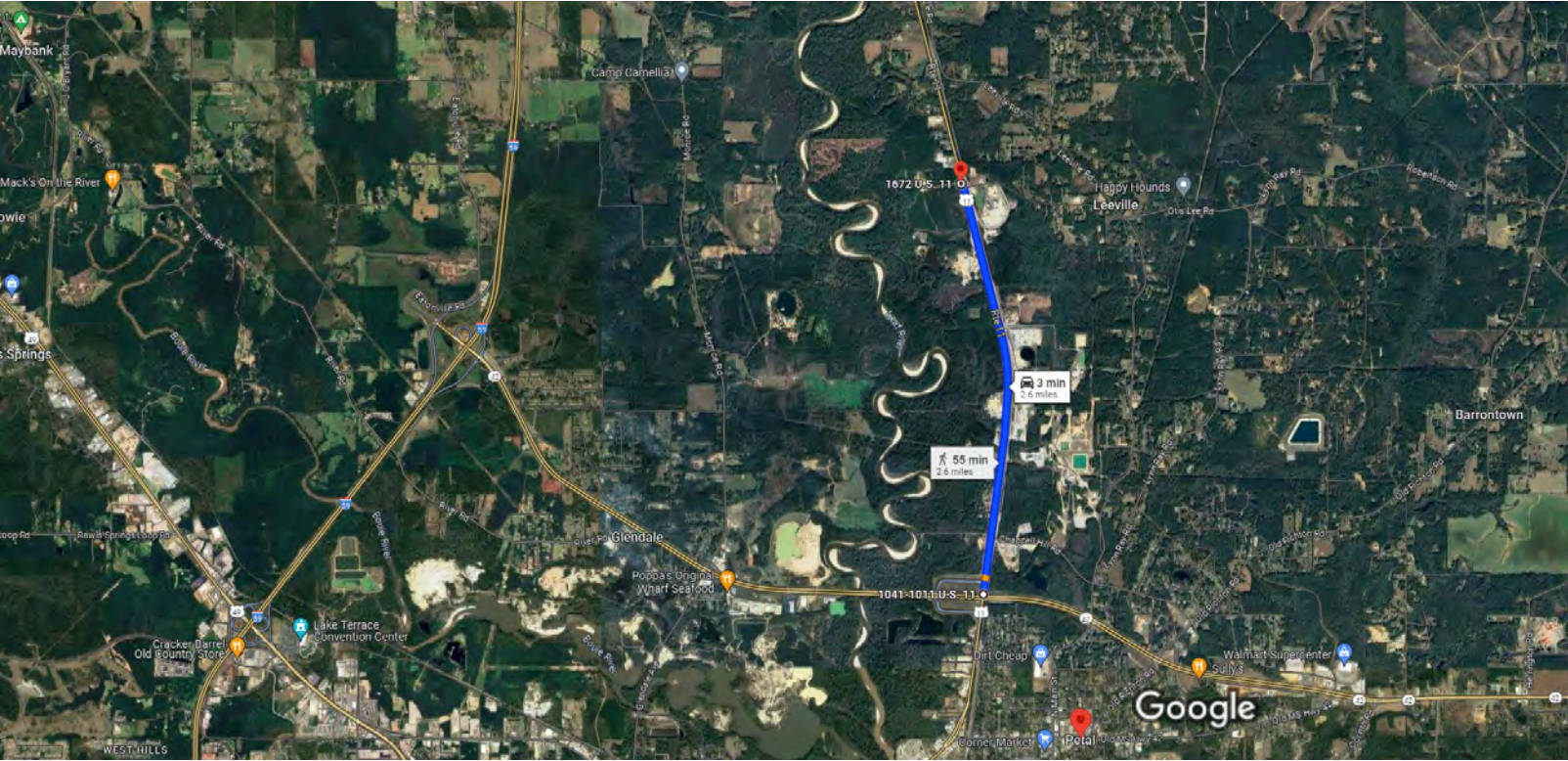




Boundaries and dimensions are approximate. This is not a survey.



Boundaries and dimensions are approximate. This is not a survey.



Imagery ©2024 Airbus, CNES / Airbus, Landsat / Copernicus, Maxar Technologies, Map data ©2024 2000 ft

FROM THE INTERSECTION OF HWY 11 N AND EVELYN GANDY PARKWAY IN PETAL, MS



1. Head north on US-11 N

Destination will be on the left

2.6 mi

CLICK HERE FOR GOOGLE MAP LINK: <https://maps.app.goo.gl/EL2tZgyCAnyxaMQd7>

LATITUDE: 31.3959

LONGITUDE: -89.2725