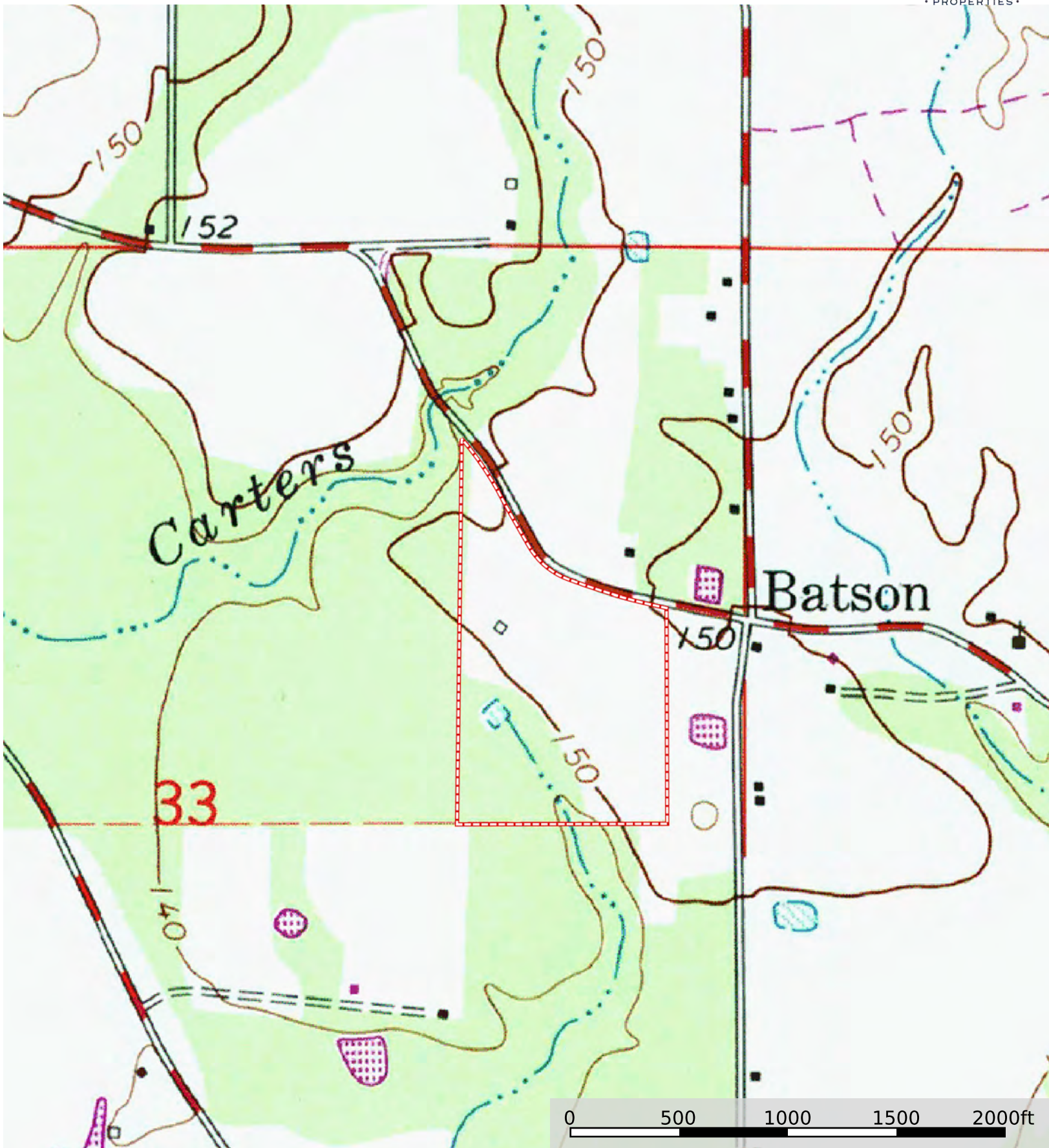


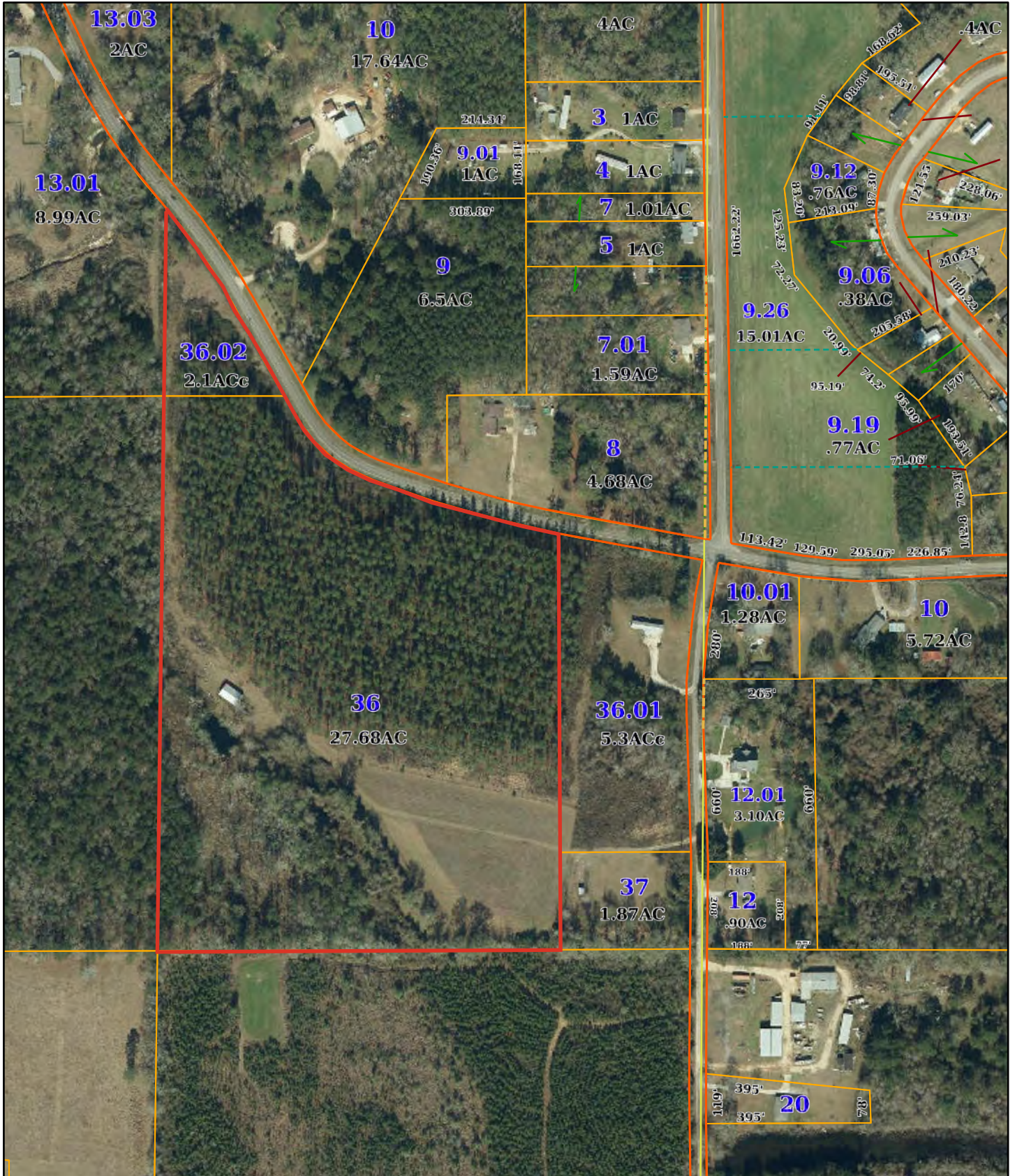
Boundary





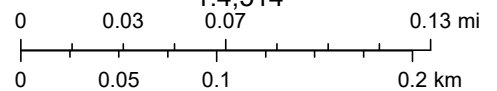
 Boundary

# NE 1/4 of SEC 33-T4N-R12W, Forrest County, MS



6/24/2024, 2:34:00 PM

1:4,514

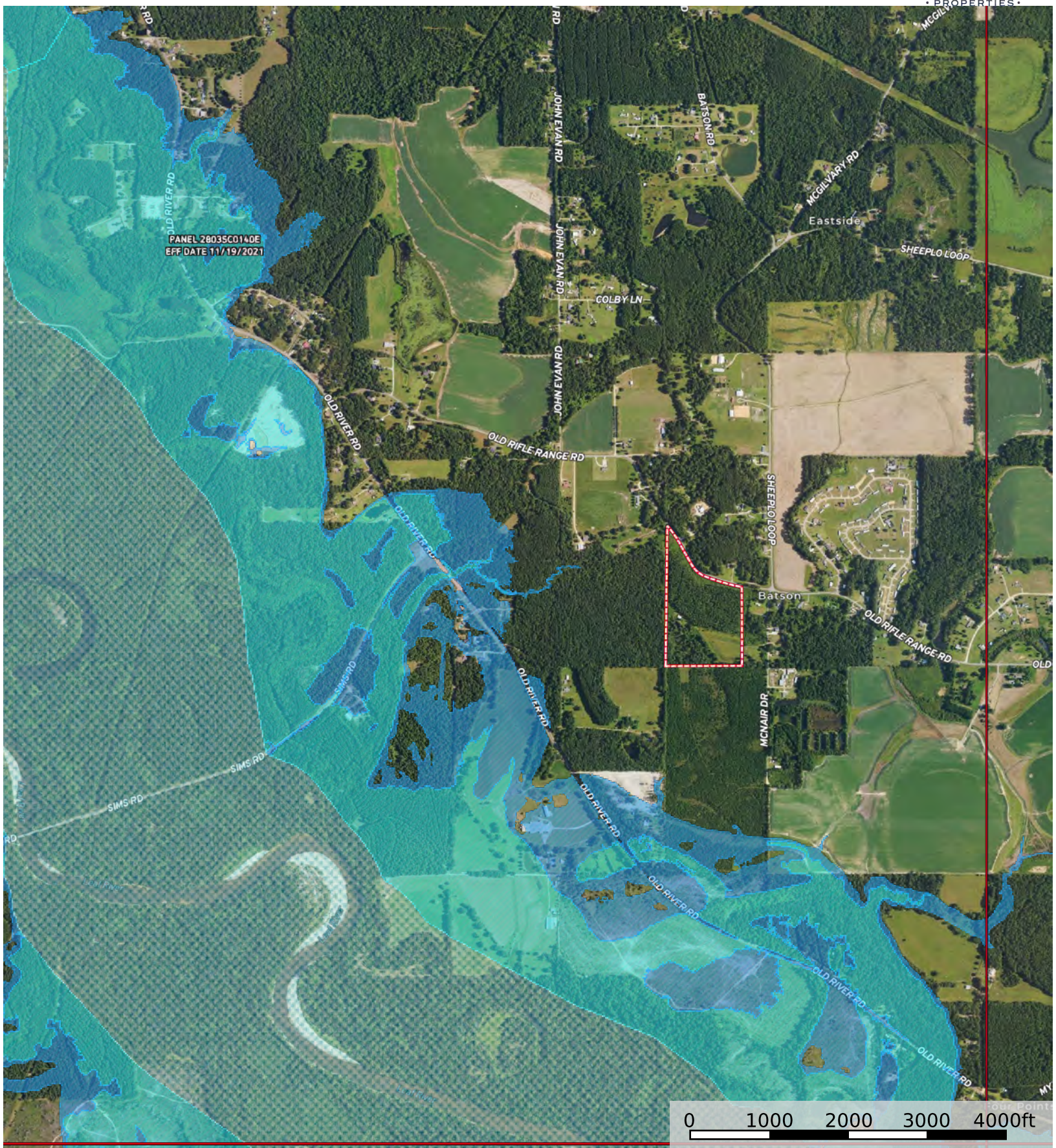


- LANDHOOK\_LN
- SECTION\_LN
- - - LOTLINE
- - - SOFT\_LN
- - - SOFT\_LN
- Parcels
- ROAD\_LN
- LEADER\_LN
- forrest\_ms\_ac
- forrest\_ms\_dim
- forrest\_ms\_parcelno
- Anno

Esri Community Maps Contributors, City Of Hattiesburg, © OpenStreetMap, Microsoft, CONANP, Esri, TomTom, Garmin, SafeGraph, GeoTechnologies, Inc, METI/NASA, USGS, EPA, NPS, US Census Bureau, USDA, USFWS

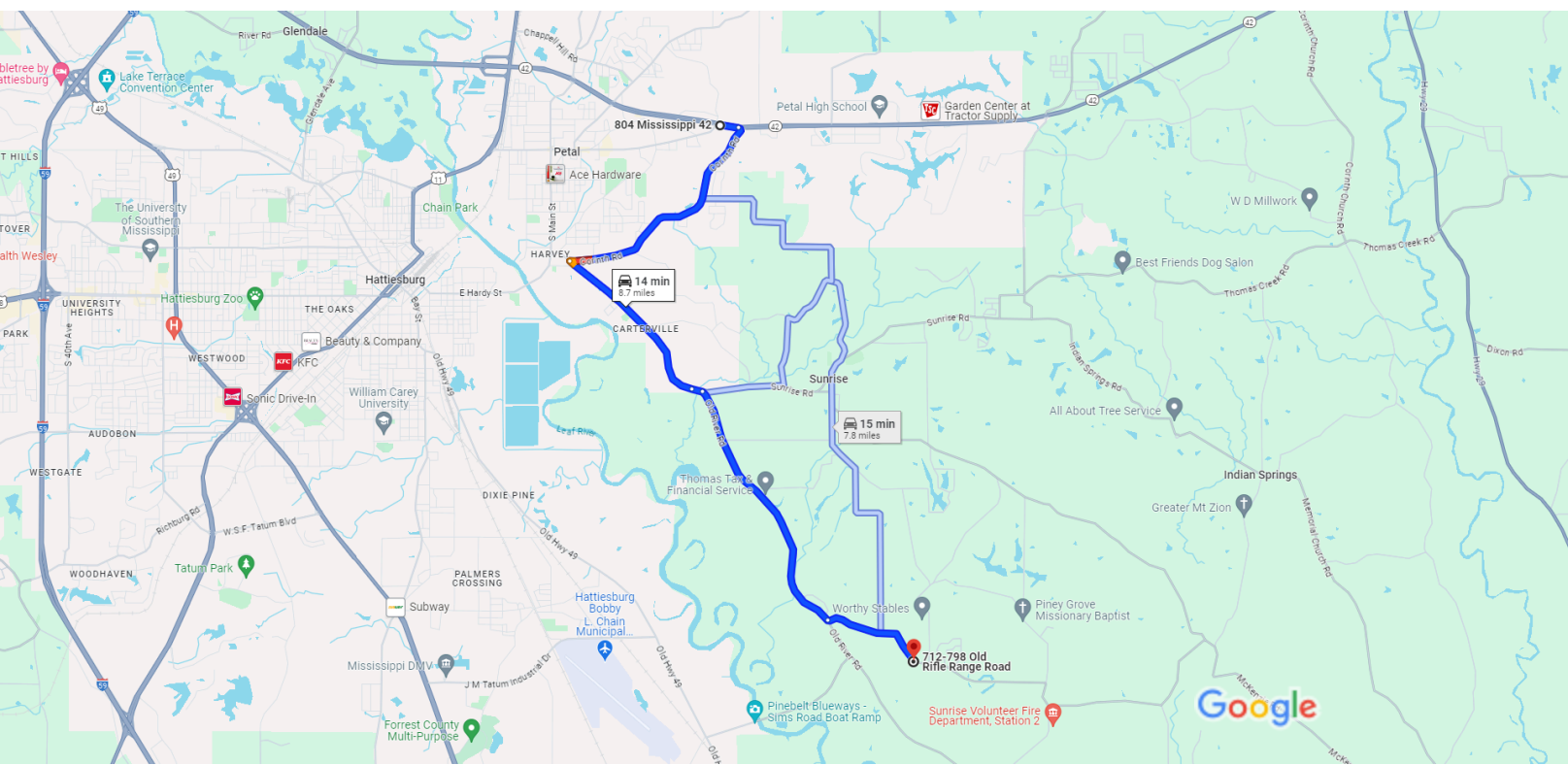
tscmaps.com

Esri Community Maps Contributors, City Of Hattiesburg, © OpenStreetMap, Microsoft, CONANP, Esri, TomTom, Garmin, SafeGraph, GeoTechnologies, Inc, METI/NASA, USGS, EPA, NPS, US



804 MS-42, Petal, MS 39465 to 712-798 Old Rifle Range Rd, Petal, MS 39465

Drive 8.7 miles, 14 min



Map data ©2024 5000 ft

804 MS-42

Petal, MS 39465

From Walmart in Petal, MS

- ↑ 1. Head east on Evelyn Gandy Pkwy  
0.2 mi
- ➔ 2. Turn right onto Corinth Rd  
2.5 mi
- ↶ 3. Sharp left onto Carterville Rd  
1.9 mi
- ↑ 4. Continue onto Sunrise Rd  
0.1 mi
- ➔ 5. Turn right onto Old River Rd  
2.8 mi
- ↶ 6. Turn left onto Old Rifle Range Rd  
1.1 mi

Coordinates  
Lat: 31.2697  
Long: -89.199

Google Map Link  
<https://maps.app.goo.gl/mFB2BRU1ddpp7EEw8>

712-798 Old Rifle Range Rd

Petal, MS 39465