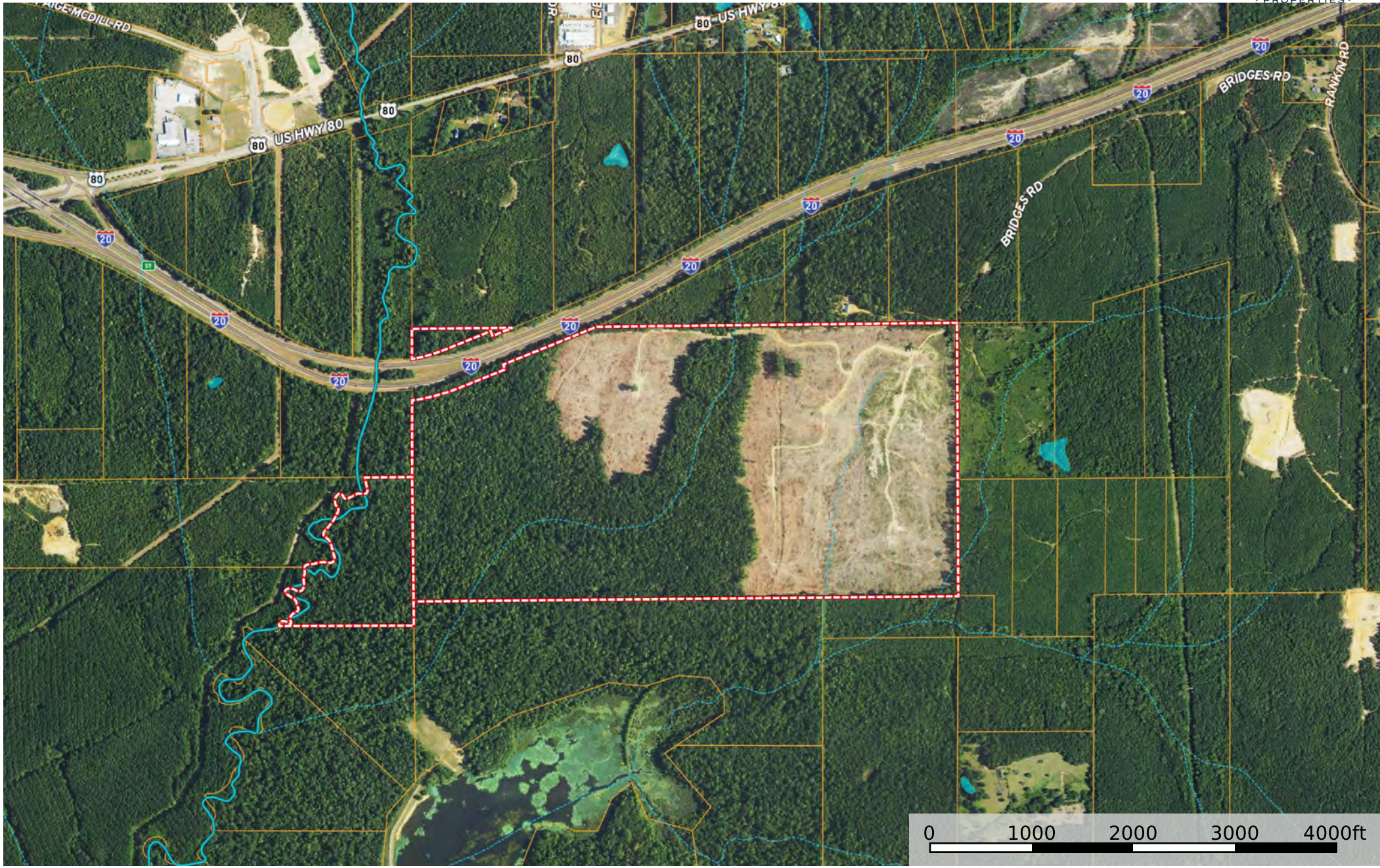
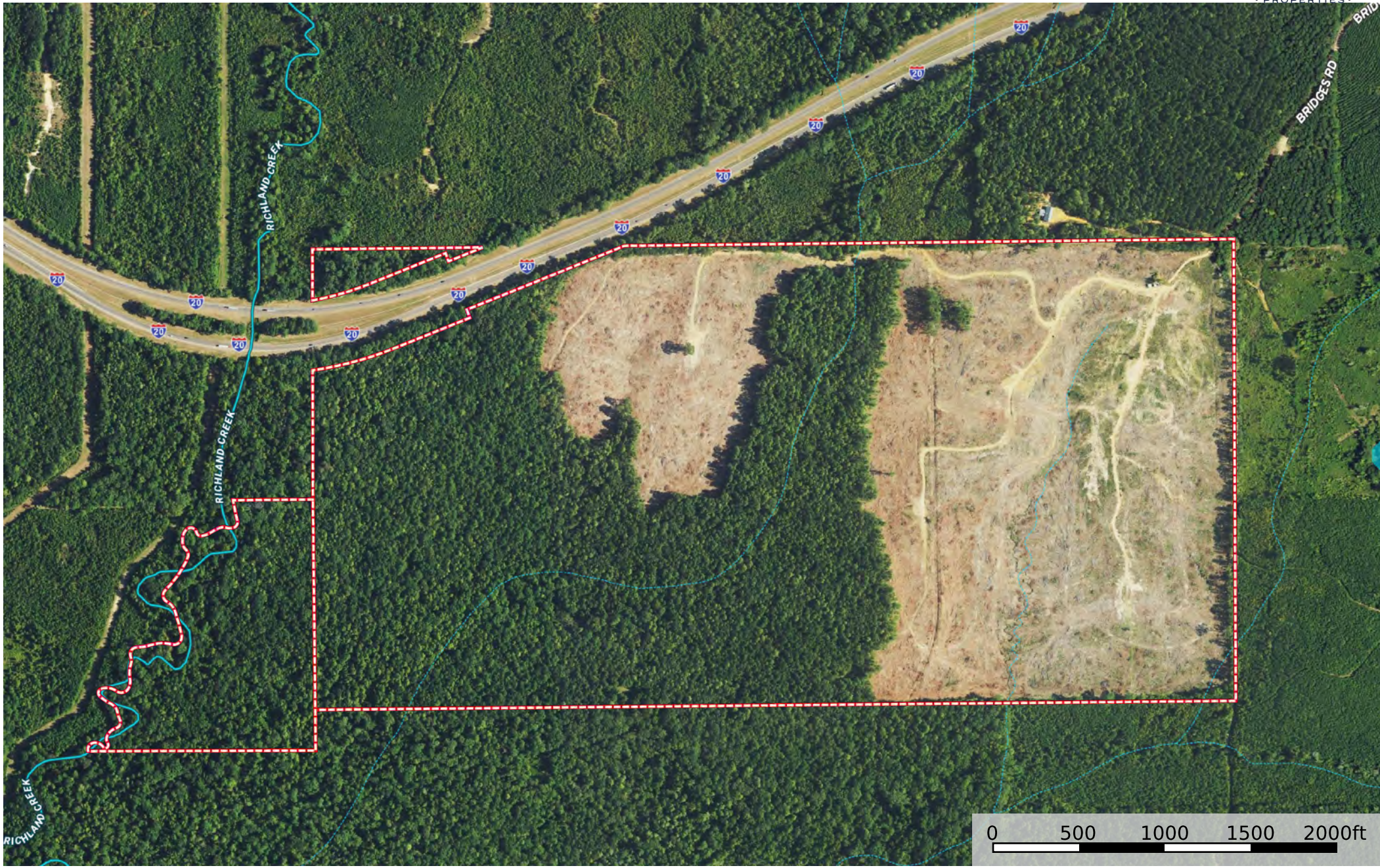
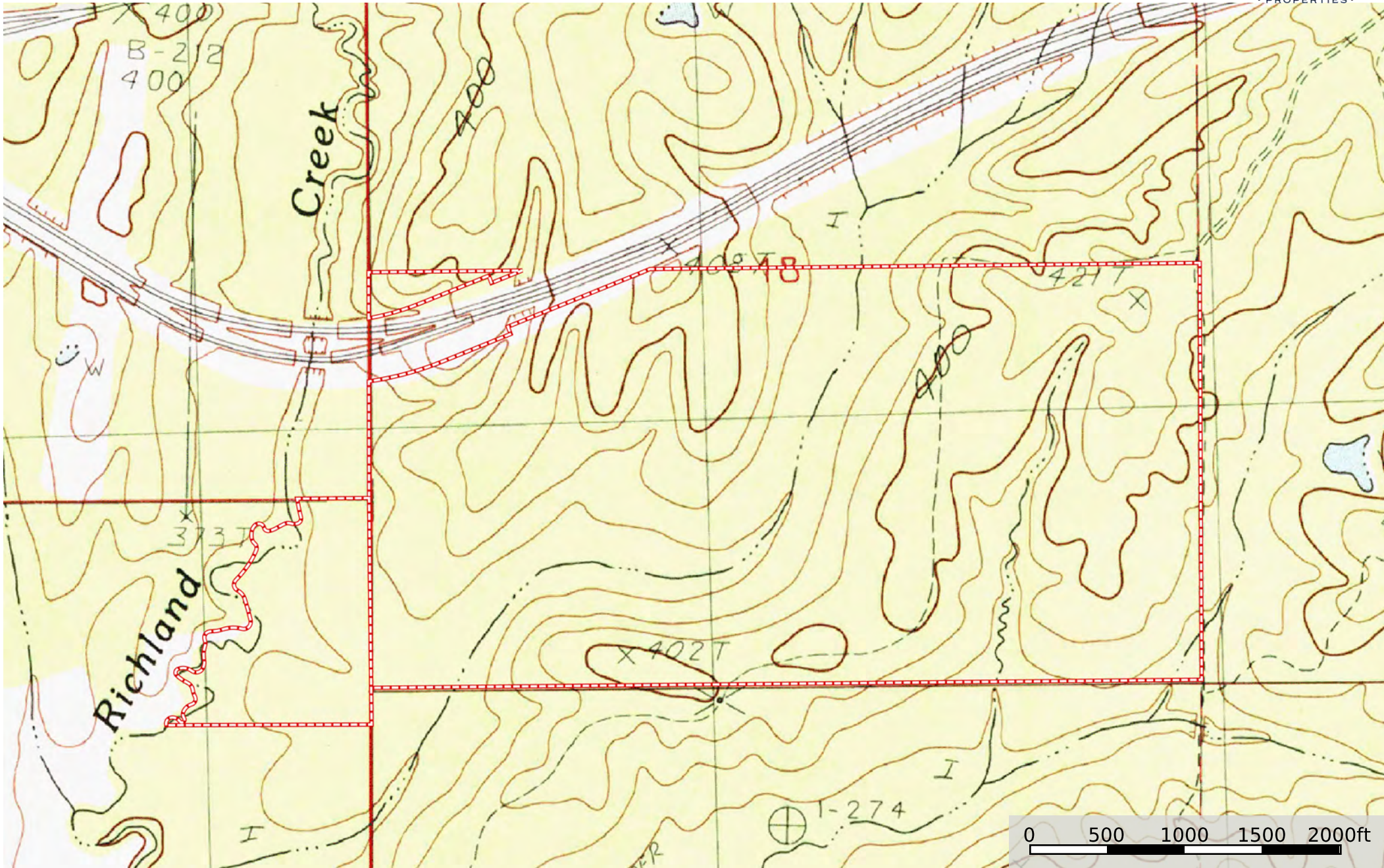


347 Rankin

Rankin County, Mississippi, 347 AC +/-

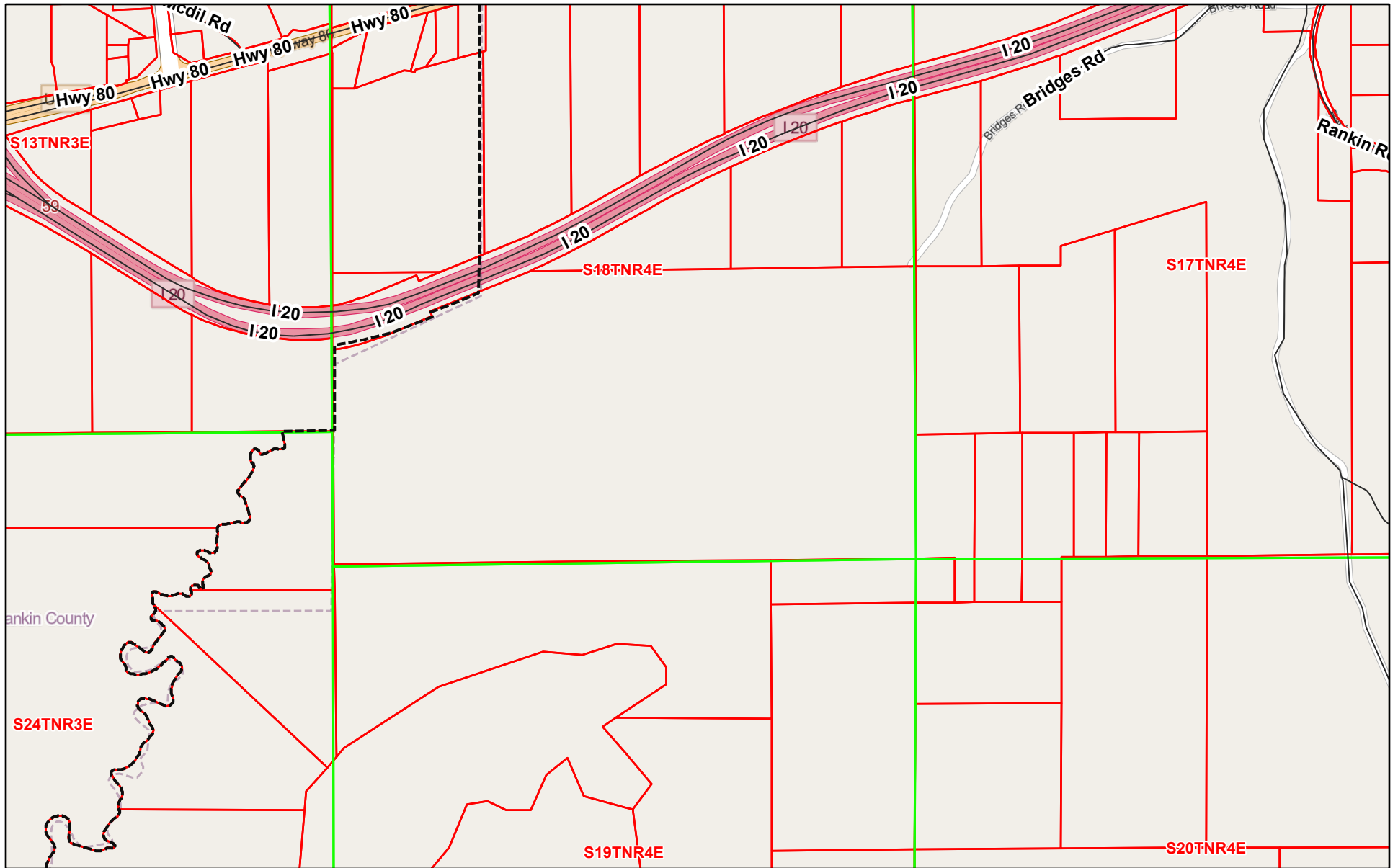






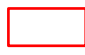
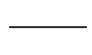


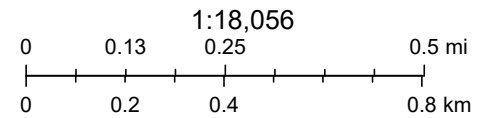
 Boundary

RANKIN COUNTY TAX MAP



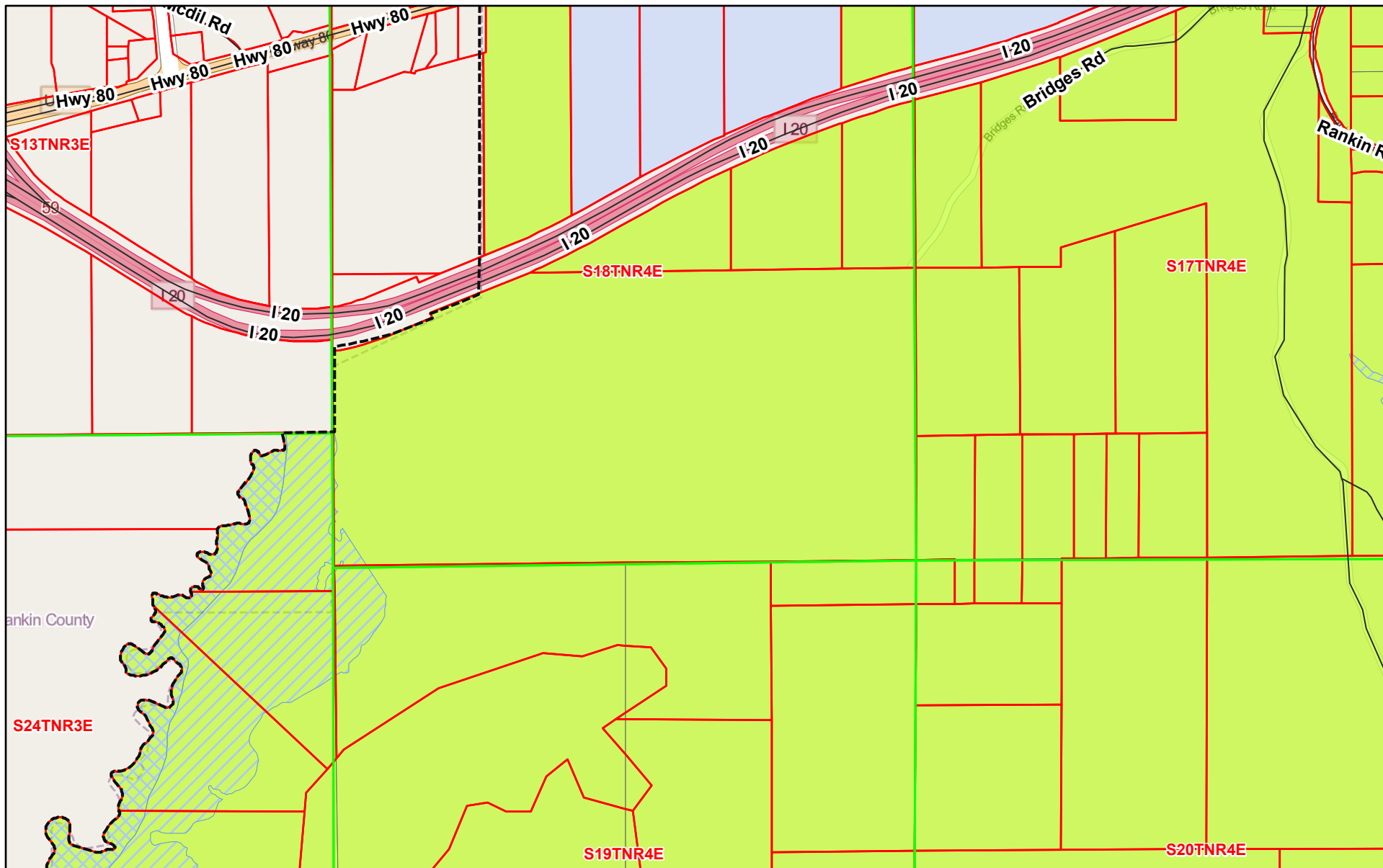
8/30/2024, 12:22:21 PM

-  Municipalities
-  Rankin Section Line
-  Parcels
-  Streets - US Census 2020




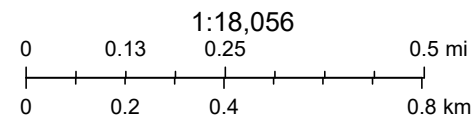
Map data © OpenStreetMap contributors, Microsoft, Facebook, Inc. and its affiliates, Esri Community Maps contributors, Map layer by Esri

RANKIN COUNTY ZONING MAP



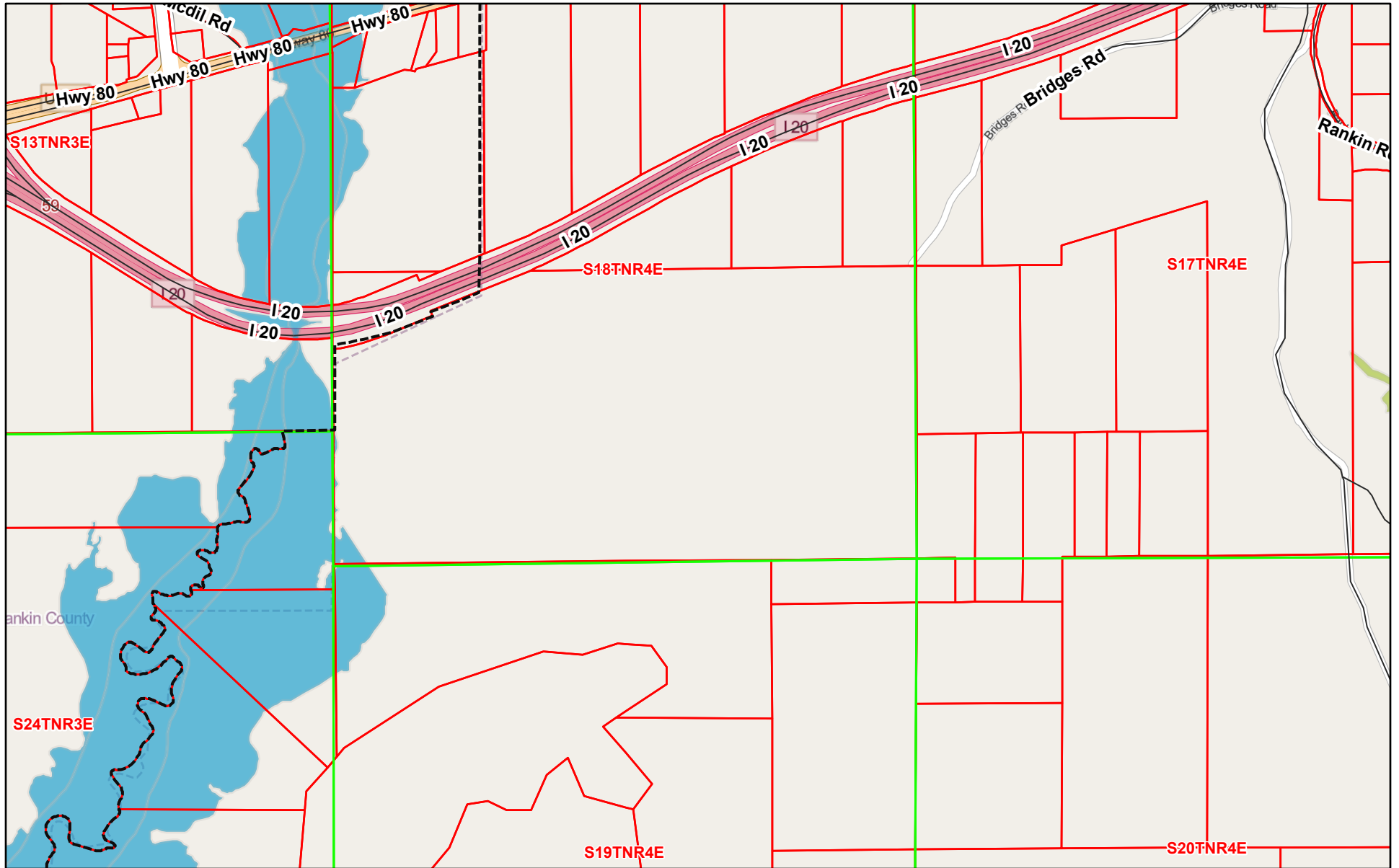
8/30/2024, 12:24:14 PM

- | | | |
|---|---|--|
|  Municipalities |  Parcels |  R-1B (Medium Density Residential District) |
|  Streets - US Census 2020 |  Zoning 2024 |  Floodway |
|  Rankin Section Line |  RE-1 (Residential Estate) |  100 Yr Floodplain |



Map data © OpenStreetMap contributors, Microsoft, Facebook, Inc. and its affiliates, Esri Community Maps contributors, Map layer by Esri

RANKIN COUNTY FEMA FLOOD MAP



8/30/2024, 12:26:11 PM

Flood Zone

Floodway

1% Annual Chance



Municipalities



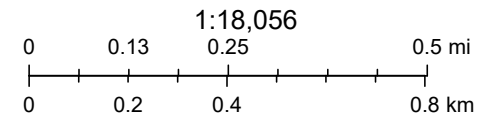
Streets - US Census 2020



Rankin Section Line

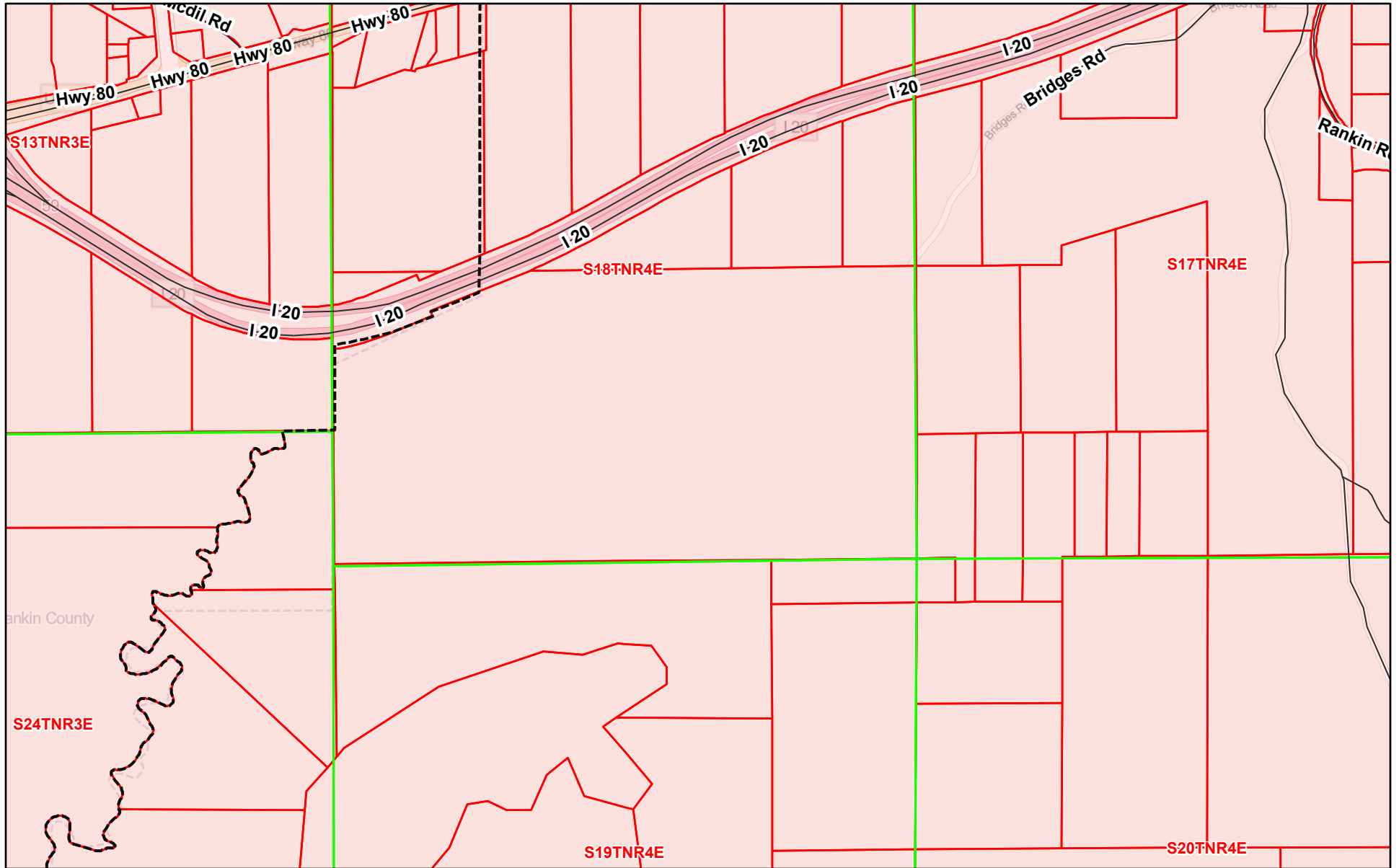


Parcels



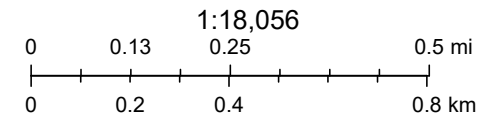
Map data © OpenStreetMap contributors, Microsoft, Facebook, Inc. and its affiliates, Esri Community Maps contributors, Map layer by Esri

RANKIN COUNTY SCHOOL BOARD



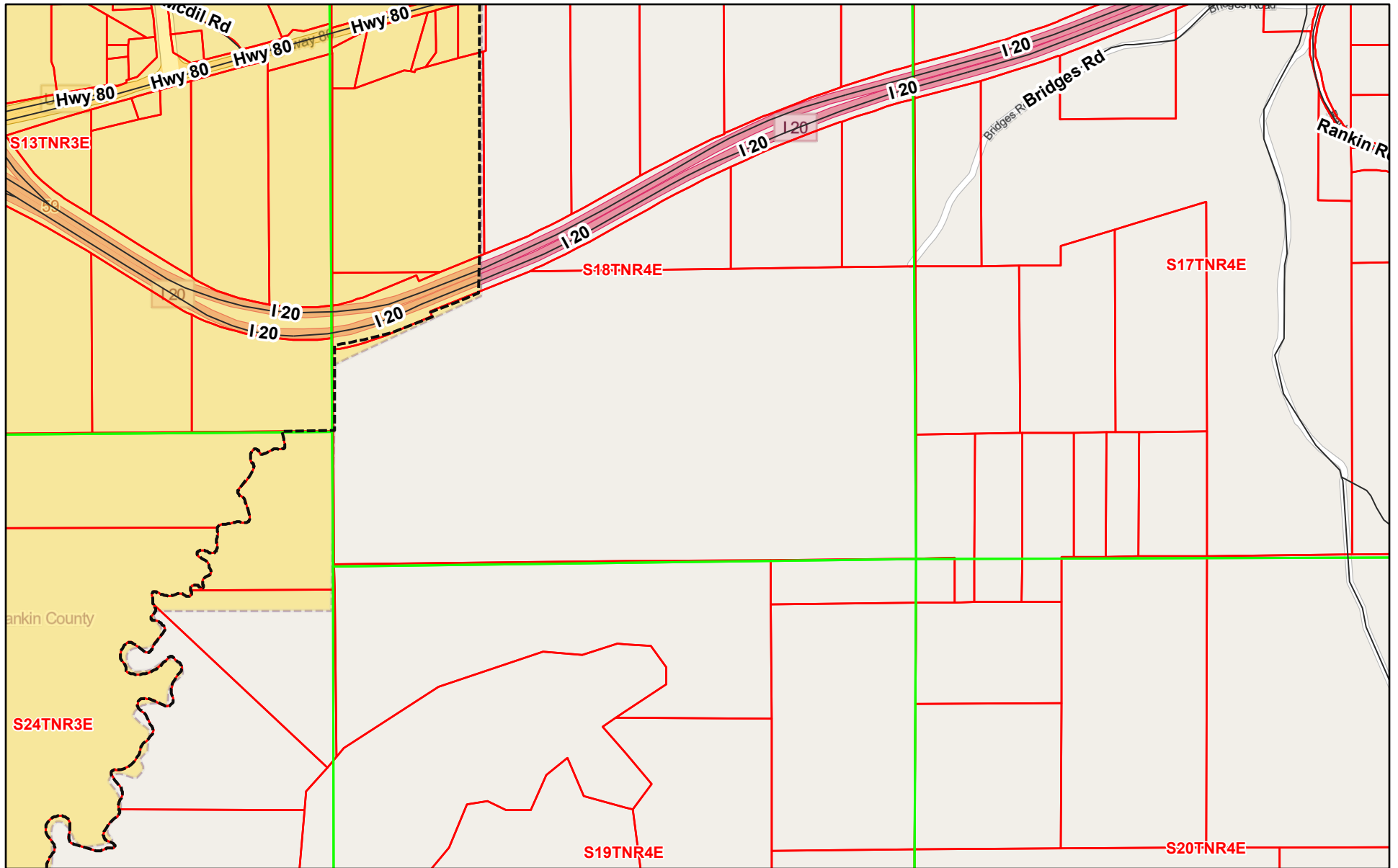
8/30/2024, 12:29:03 PM

- Municipalities
- Rankin Section Line
- Streets - US Census 2020
- Parcels
- School Board Districts Adopted 2022
- RCSB District 5



Map data © OpenStreetMap contributors, Microsoft, Facebook, Inc. and its affiliates, Esri Community Maps contributors, Map layer by Esri

BRANDON WARD



8/30/2024, 12:31:10 PM

Brandon Wards

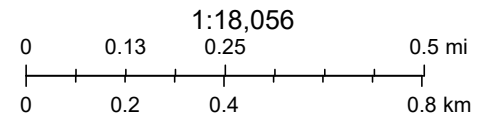
6

Municipalities

Streets - US Census 2020

Rankin Section Line

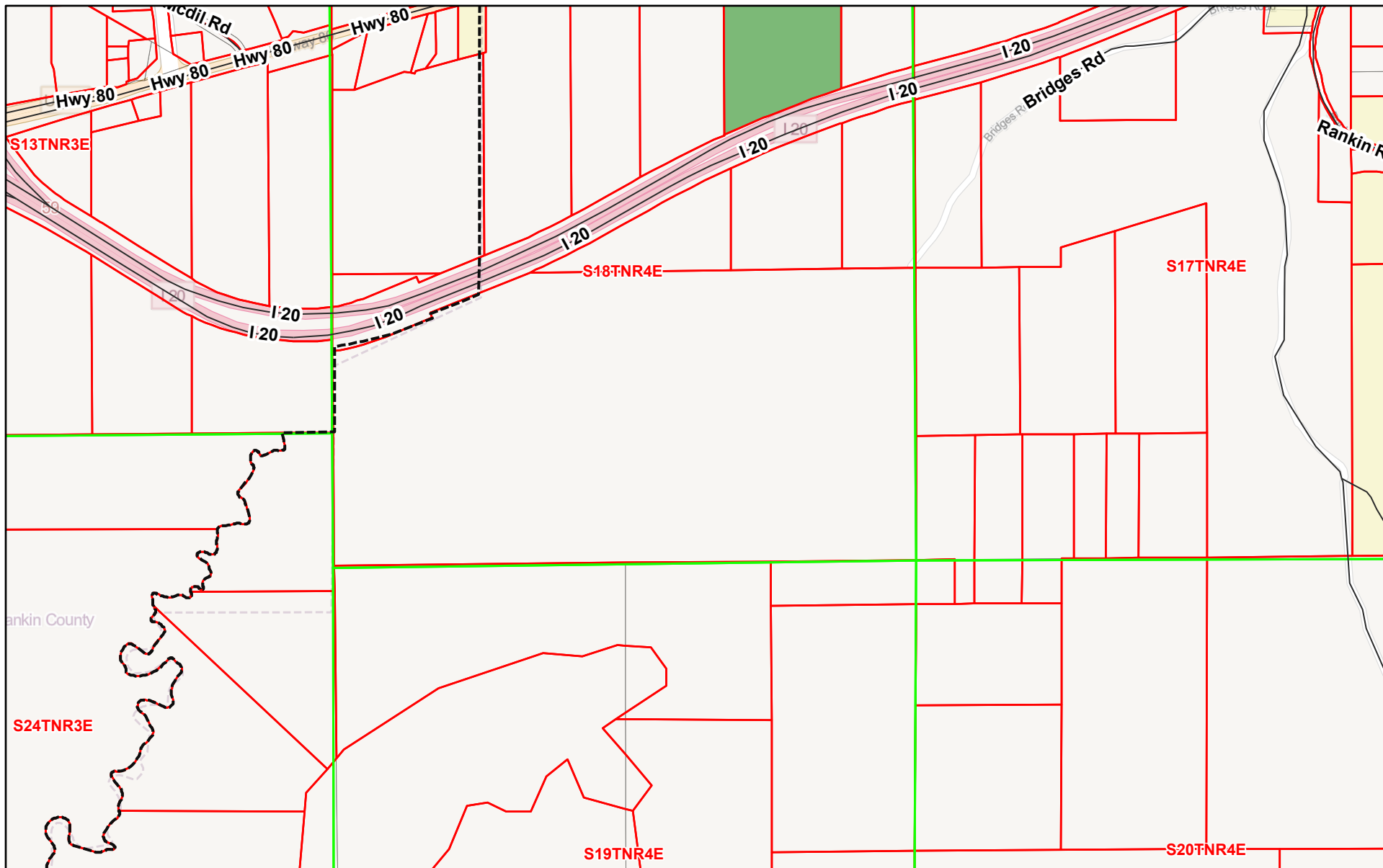
Parcels



Map data © OpenStreetMap contributors, Microsoft, Facebook, Inc. and its affiliates, Esri Community Maps contributors, Map layer by Esri

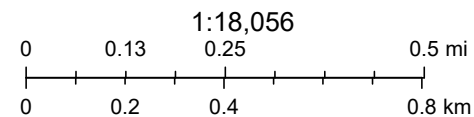
Rankin County
CMPDD

RANKIN COUNTY EXISTING LAND USE



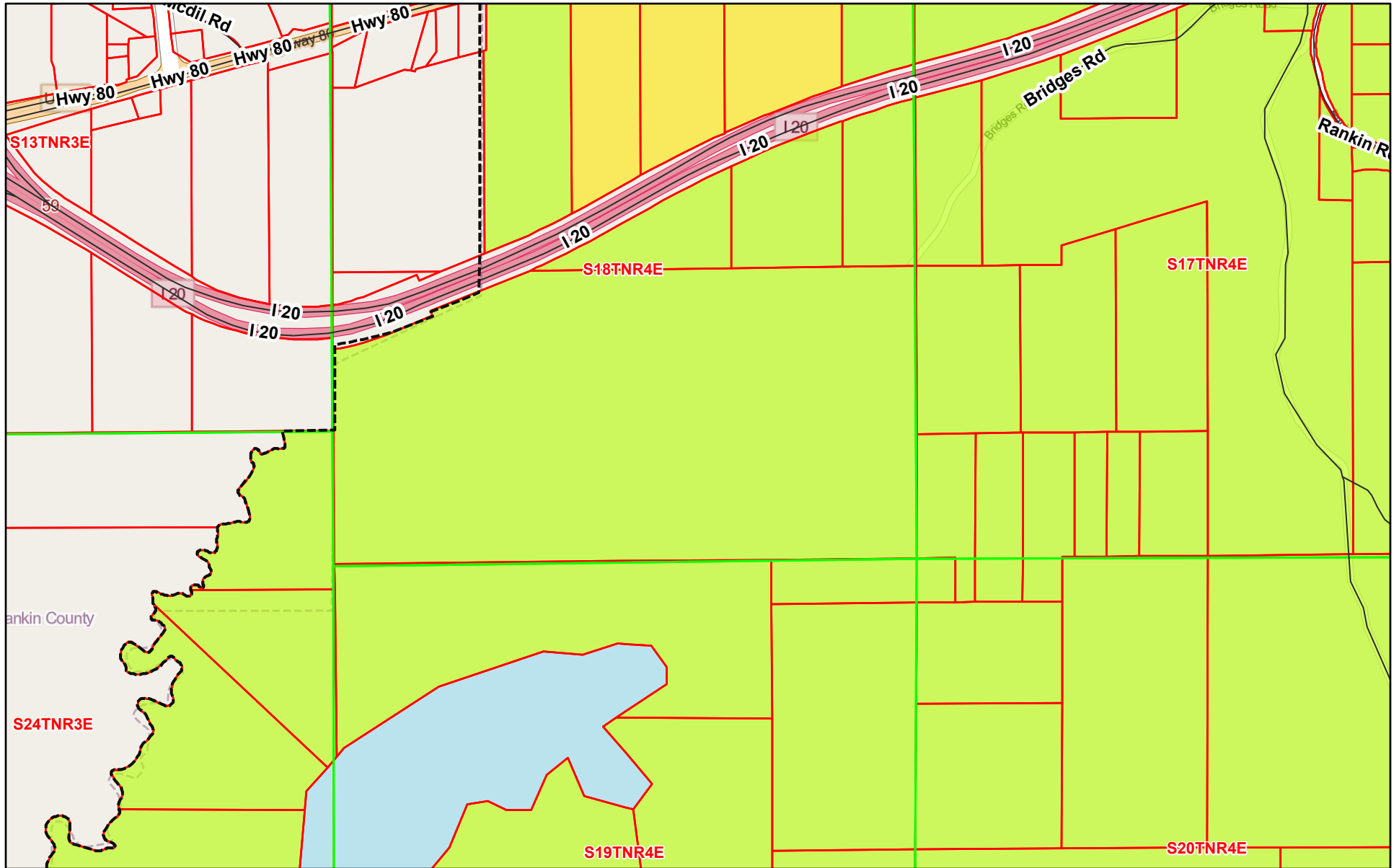
8/30/2024, 12:33:20 PM

- Municipalities
- Parcels
- Low Density Residential
- Streets - US Census 2020
- Existing Land Use
- Public/Semi-Public
- Rankin Section Line
- Agricultural/Vacant



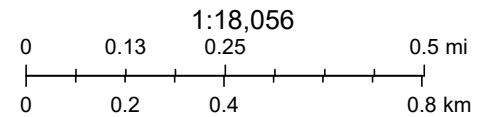
Map data © OpenStreetMap contributors, Microsoft, Facebook, Inc. and its affiliates, Esri Community Maps contributors, Map layer by Esri

RANKIN COUNTY FUTURE LAND USE

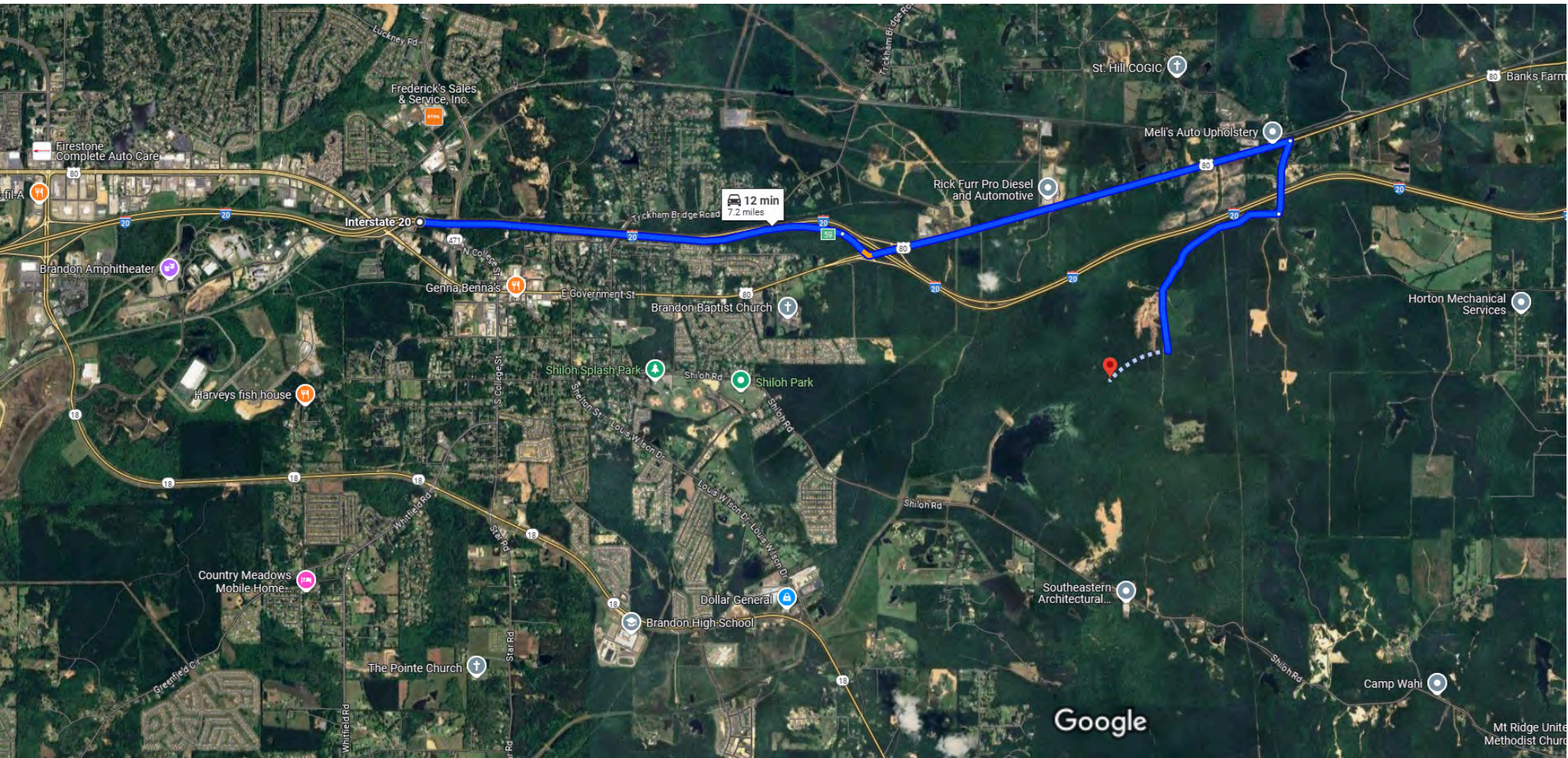


8/30/2024, 12:34:51 PM

- Municipalities
- Parcels
- Medium Density Residential
- Streets - US Census 2020
- Future Land Use 2023
- Water Bodies
- Rankin Section Line
- Residential Estate



Map data © OpenStreetMap contributors, Microsoft, Facebook, Inc. and its affiliates, Esri Community Maps contributors, Map layer by Esri



Imagery ©2024 Airbus, Landsat / Copernicus, Maxar Technologies, Map data ©2024 Google 2000 ft

From the intersection of Hwy 80 and Interstate 20 in Brandon, MS 39042

Travel east on I-20 for 2.6 miles to exit 59. Merge on to US Hwy 80 E, proceed for 2.9 miles. Turn right on to Rankin Rd., proceed for 0.5 miles. Turn right on to Bridges Rd., proceed for 1.3 miles. Bridges Rd. will dead end at the gate of the subject property.

Latitude: 32.2733 Longitude: -89.9201 Click here for Google Map Link: <https://maps.app.goo.gl/a3fjWgD9h4bM9FE69>