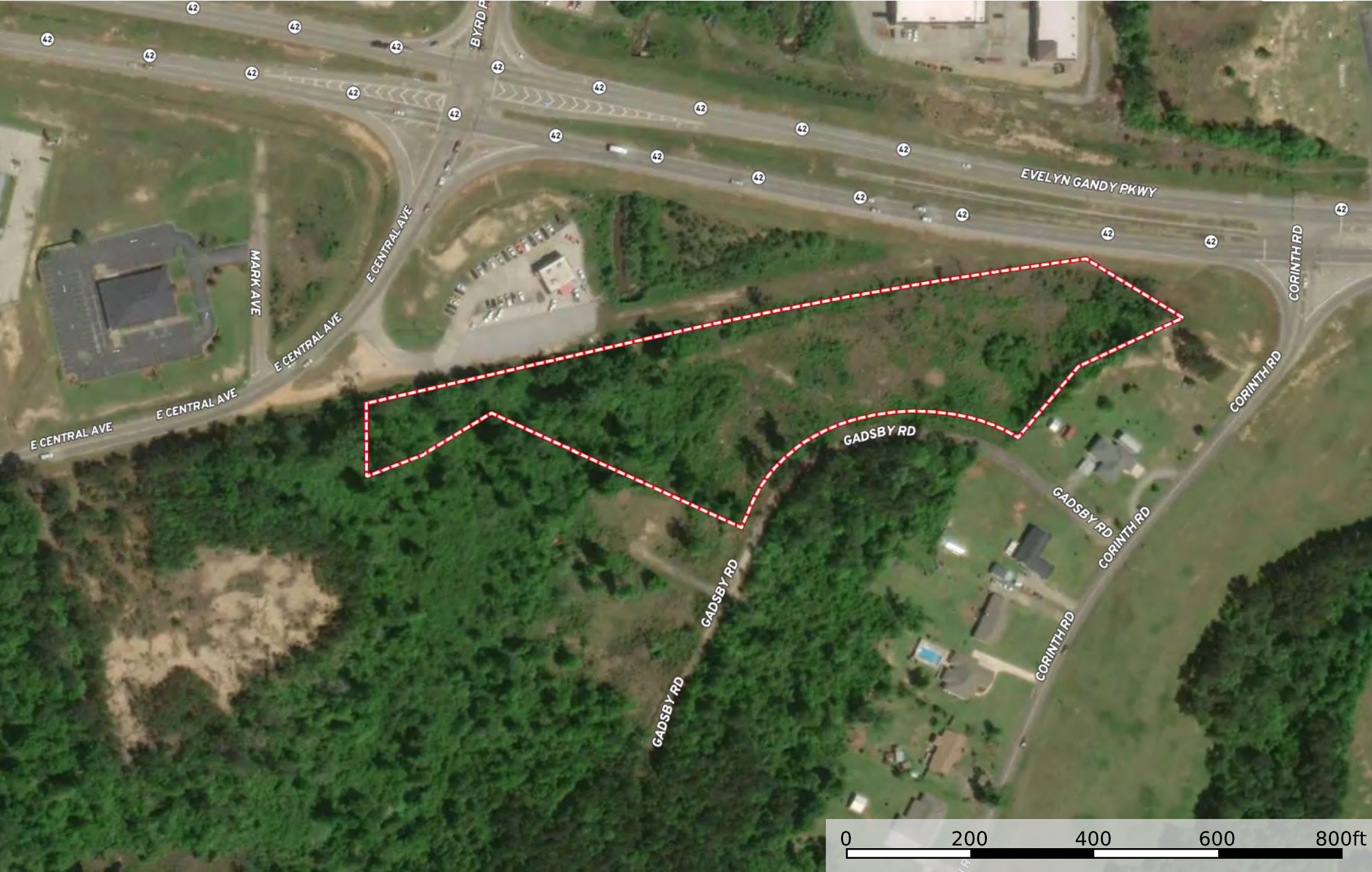
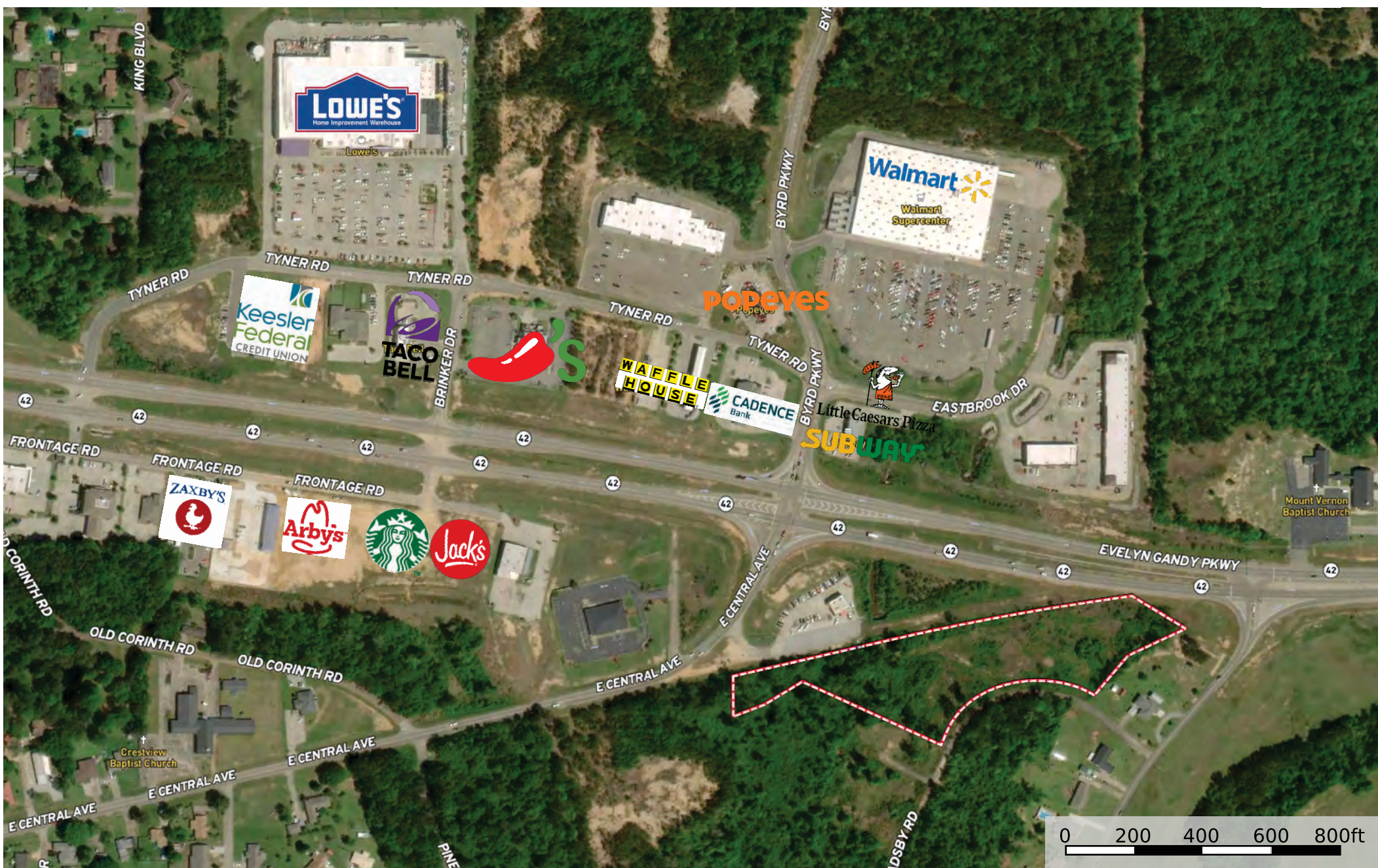


5.5 Forrest-Evelyn Gandy
Forrest County, Mississippi, 5.5 AC +/-



5.5 Forrest-Evelyn Gandy
Forrest County, Mississippi, 5.5 AC +/-



Boundary

SOUTH
& COMPANY
• PROPERTIES •



The information contained herein was obtained from sources deemed to be reliable. Land ID™ Services makes no warranties or guarantees as to the completeness or accuracy thereof.



This map was printed using information provided by the Mississippi Department of Transportation
Data shown is 2023 AADT



From the intersection of Evelyn Gandy Parkway and Hwy 11 in Petal, MS

Map data ©2025 Google 1000 ft

MS-42

Petal, MS 39465

↑ 1. Travel east on Evelyn Gandy Parkway towards Walmart

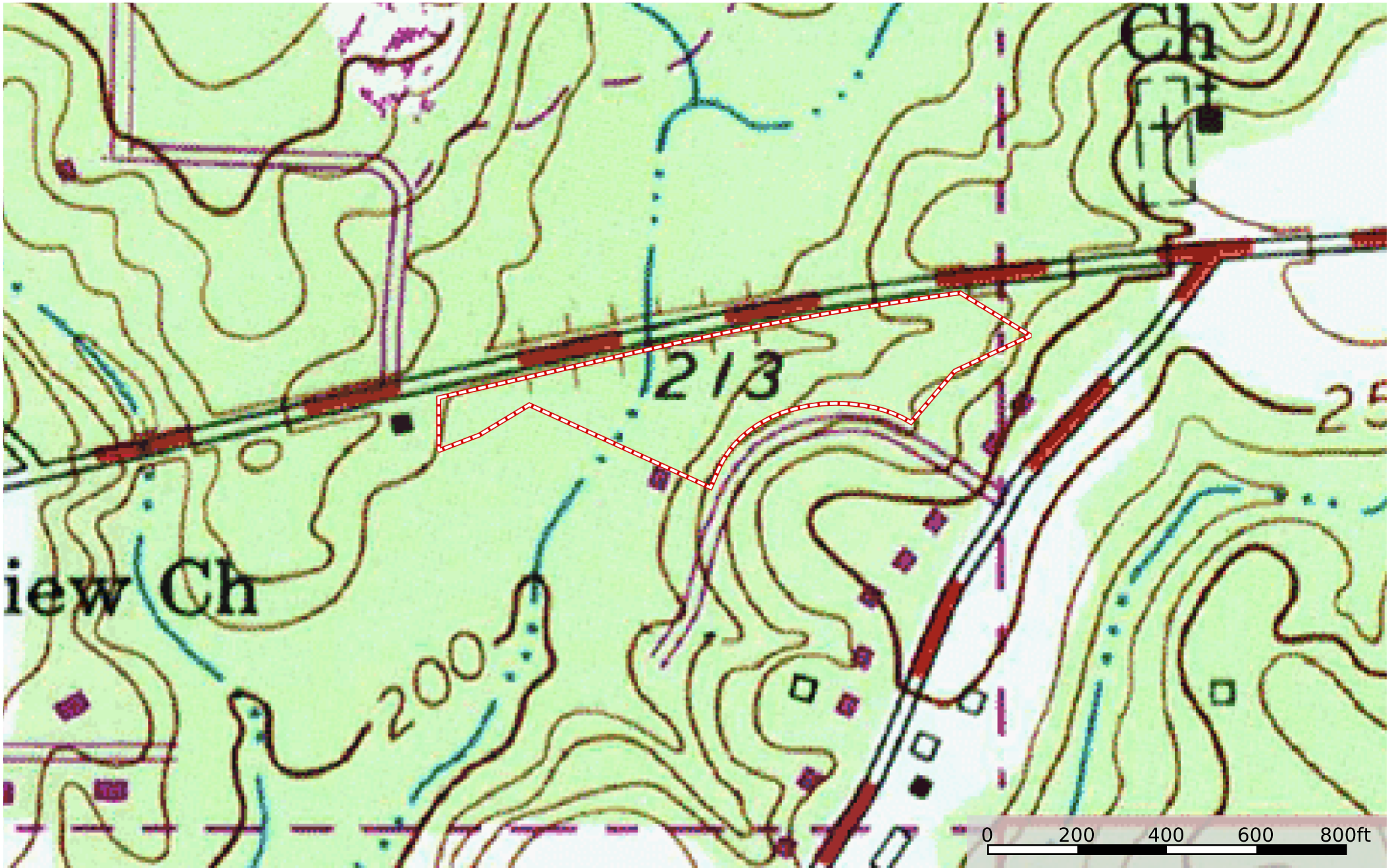
Destination will be on the right


2.4 mi

[Click Here For Google Map Link](#)

<https://maps.app.goo.gl/sfZvPP6D4x3kC2A27>

5.5 Forrest-Evelyn Gandy
Forrest County, Mississippi, 5.5 AC +/-



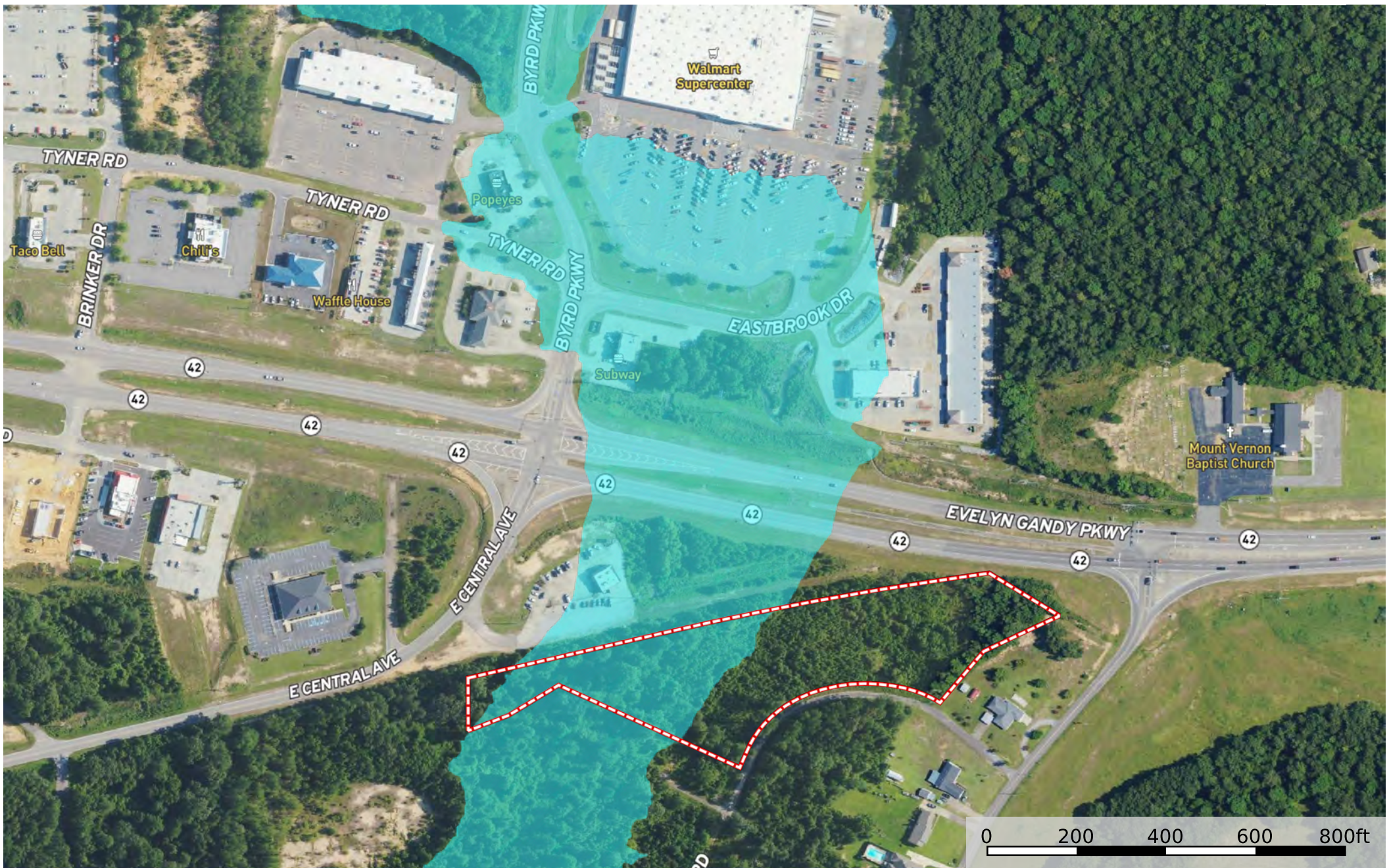
 Boundary

SOUTH
& COMPANY
• PROPERTIES •



The information contained herein was obtained from sources deemed to be reliable. Land id™ Services makes no warranties or guarantees as to the completeness or accuracy thereof.

5.5 Forrest-Evelyn Gandy
Forrest County, Mississippi, 5.5 AC +/-



Boundary

100 Year Floodplain

500 Year Floodplain

Floodway

Special

Unmapped/ Not Included

